

The Crestwood



the **CRESTWOOD** — Model Elevation A



the **CRESTWOOD** — Model Elevation B



the **CRESTWOOD** — Model Elevation C

ALL ARTISTS CONCEPTIONS OF EXTERIOR ELEVATIONS INCLUDE OPTIONAL FEATURES.

Special Features:

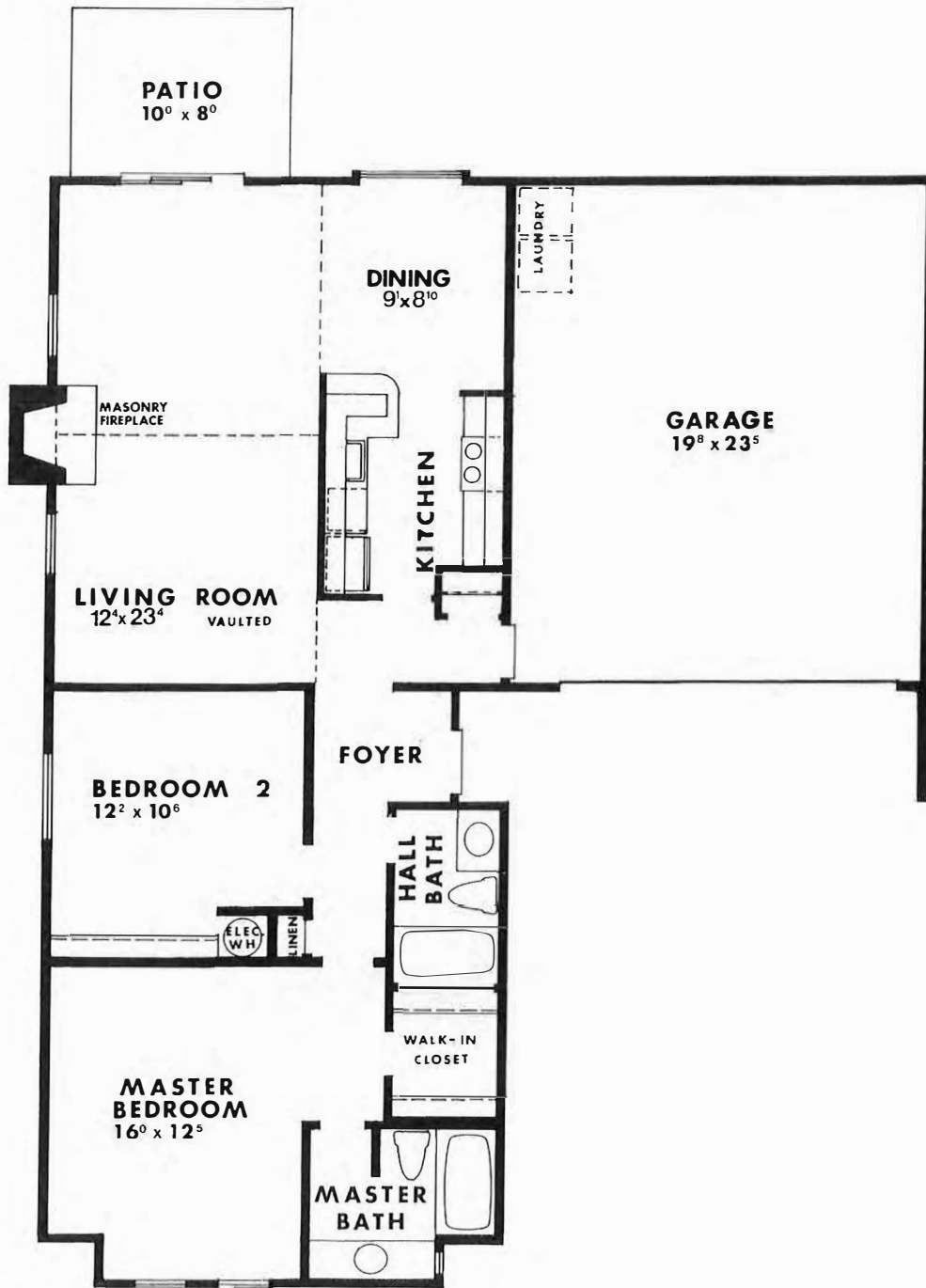
- Masonry Fireplace
- Vaulted Living Room
- Snack Area off Kitchen
- Two Full Baths
- Oversized Garage
- Covered Entry

summerplace

Northeast 148th and Halsey Streets
Portland, Oregon

Hillman Properties
NORTHWEST

Developers of King City, Summerfield, The
Highlands, Summerplace and Fairway Village



The Crestwood

1121 SQ. FT.

In our effort to constantly update and improve our designs, we reserve the right to modify or change plans, specifications, features, and prices without prior notice. Room sizes are approximate.