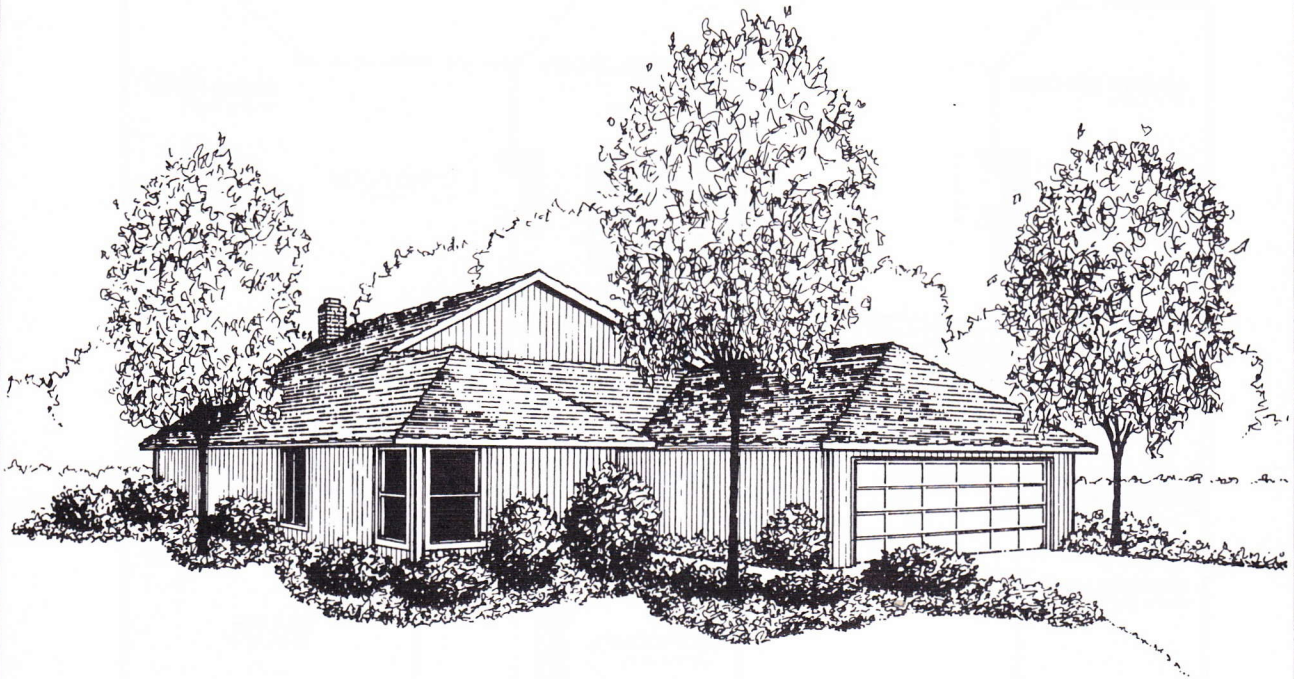


The Bayview

1545 SQ. FT.



Special Features:

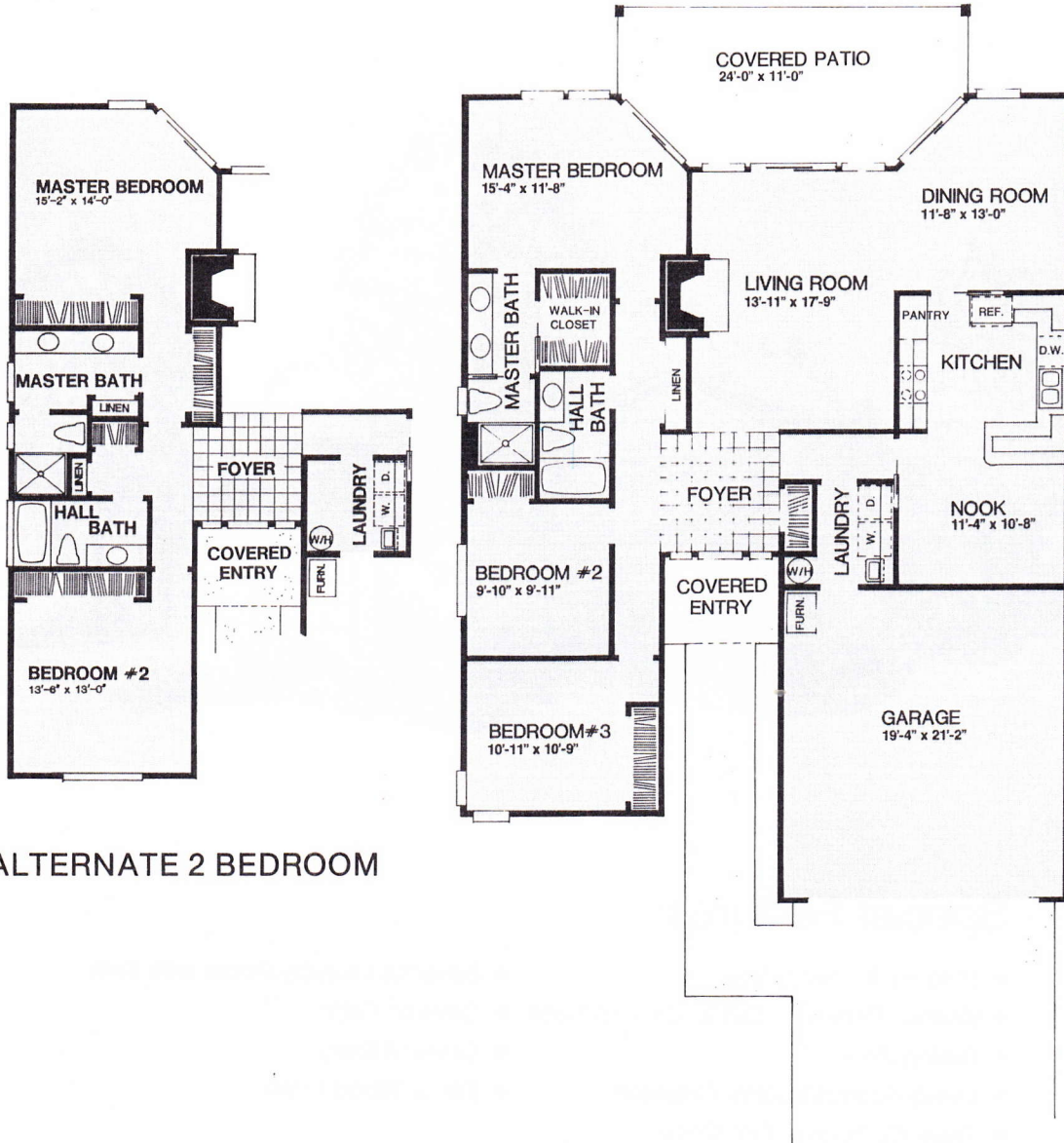
- 1545 sq. ft. Living Area
- Kitchen/Peninsula Eating Bar and Nook
- Dining Room
- Living Room/Masonry Fireplace
- Three Bedrooms/Two Baths
- Master Bedroom/Walk-in Closet
- Separate Laundry Room with Sink
- Covered Patio
- Covered Entry
- Tile or Wood Foyer

summerplace

Northeast 148th and Halsey Streets
Portland, Oregon

Hillman Properties
NORTHWEST

Developers of King City, Summerfield, The
Highlands, Summerplace and Fairway Village

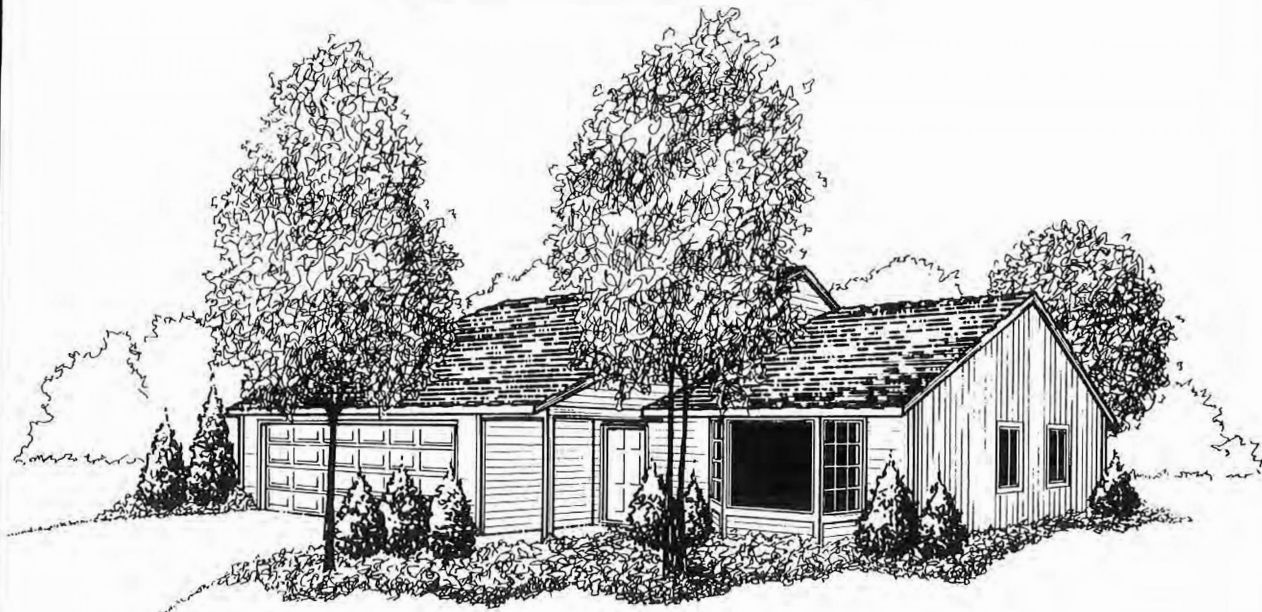


ALTERNATE 2 BEDROOM

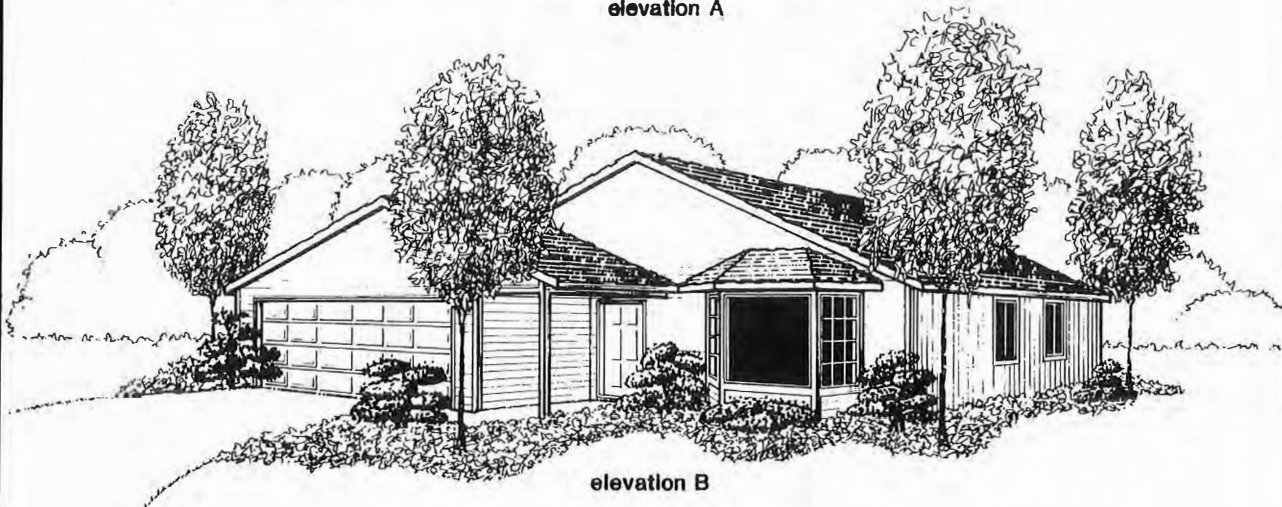
The Bayview
1545 SQ. FT.

In our effort to constantly update and improve our designs, we reserve the right to modify or change plans, specifications, features, and prices without prior notice. Room sizes are approximate.

The Broadmoor



elevation A



elevation B

All artist's conceptions of exterior elevations may include optional features.

Special Features:

- 1286 sq. ft. Living Area
- Living Room and Family Room
- Machine Brocade Ceilings
- Deadbolt Door Lock
- Two Bedrooms, Two Baths
- Master Bedroom Suite
- Forced Air Gas Furnace
- Masonry Fireplace

summerplace

Northeast 148th and Halsey Streets
Portland, Oregon

Hillman Properties
NORTHWEST

Developers of King City, Summerfield, The
Highlands, Summerplace and Fairway Village



The Broadmoor

1286 SQ. FT.

In our effort to constantly update and improve our designs, we reserve the right to modify or change plans, specifications, features, and prices without prior notice. Room sizes are approximate.

The Cambridge



All artist's conceptions of exterior elevations may include optional features.

Special Features:

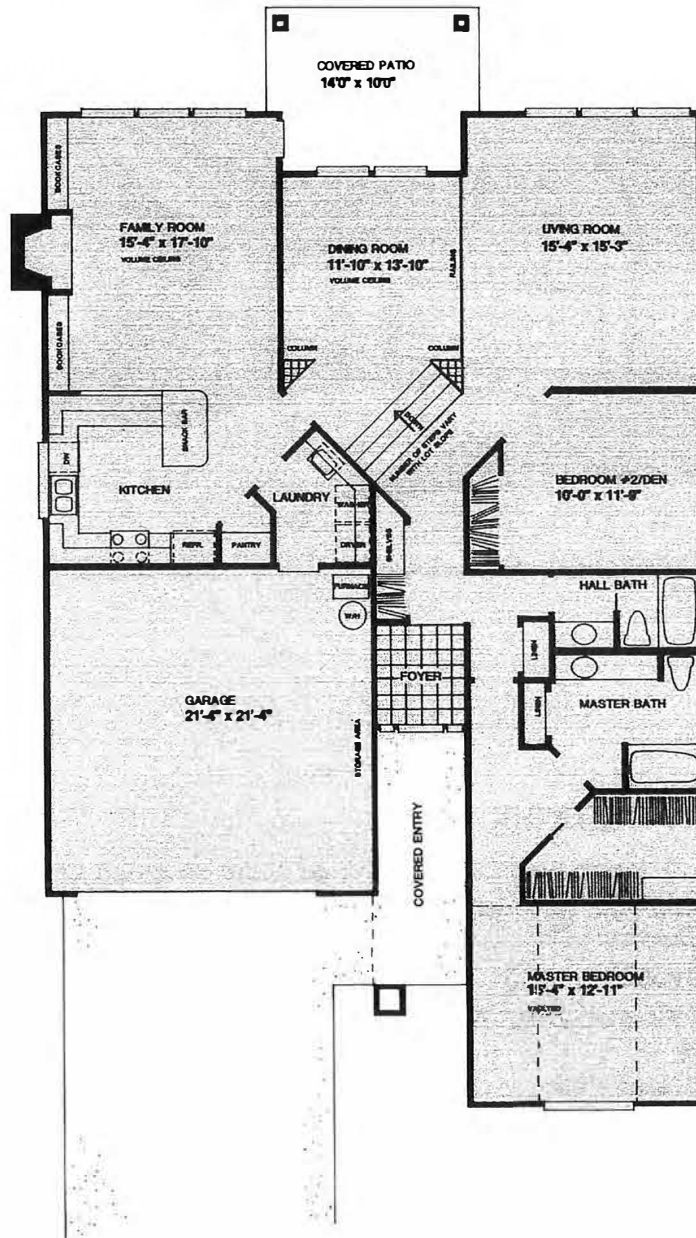
- 1914 sq. ft. Living Area
- Master Bedroom Suite plus Large Second Bedroom/Den
- Two Bathrooms
- Masonry Fireplace with Built-in Bookcase
- Large Covered Patio
- Custom Kitchen with Oak Cabinets
- Large Formal Dining Room
- Storage Area In Garage
- Wood Wrapped Windows
- Deadbolt Door Lock
- Forced Air Gas Furnace
- Machine Brocade Ceilings
- Tile or Oak Entry
- Laundry Room
- Vaulted Ceilings

summerplace

Northeast 148th and Halsey Streets
Portland, Oregon

Hillman Properties
NORTHWEST

Developers of King City, Summerfield, The
Highlands, Summerplace and Fairway Village



The Cambridge

1914 SQ. FT.

In our effort to constantly update and improve our designs, we reserve the right to modify or change plans, specifications, features, and prices without prior notice. Room sizes are approximate.

The Carmel



All artist's conceptions of exterior elevations may include optional features.

Special Features:

- 1314 sq. ft. Living Area
- Bay Window
- Machine Brocade Ceilings
- Deadbolt Door Lock
- Ample Storage
- Laundry Room
- Two Bedrooms, Two Baths
- Master Bedroom Suite
- Forced Air Gas Furnace
- Masonry Fireplace

summerplace

Northeast 148th and Halsey Streets
Portland, Oregon



HAYDEN CORPORATION

Developers of King City, Summerfield,
Summerplace and Fairway Village



The Carmel

1314 sq. ft.

In our effort to constantly update and improve our designs, we reserve the right to modify or change plans, specifications, features, and prices without prior notice. Room sizes are approximate.

The Crestwood



the **CRESTWOOD** — Model Elevation A



the **CRESTWOOD** — Model Elevation B



the **CRESTWOOD** — Model Elevation C

ALL ARTISTS CONCEPTIONS OF EXTERIOR ELEVATIONS INCLUDE OPTIONAL FEATURES.

Special Features:

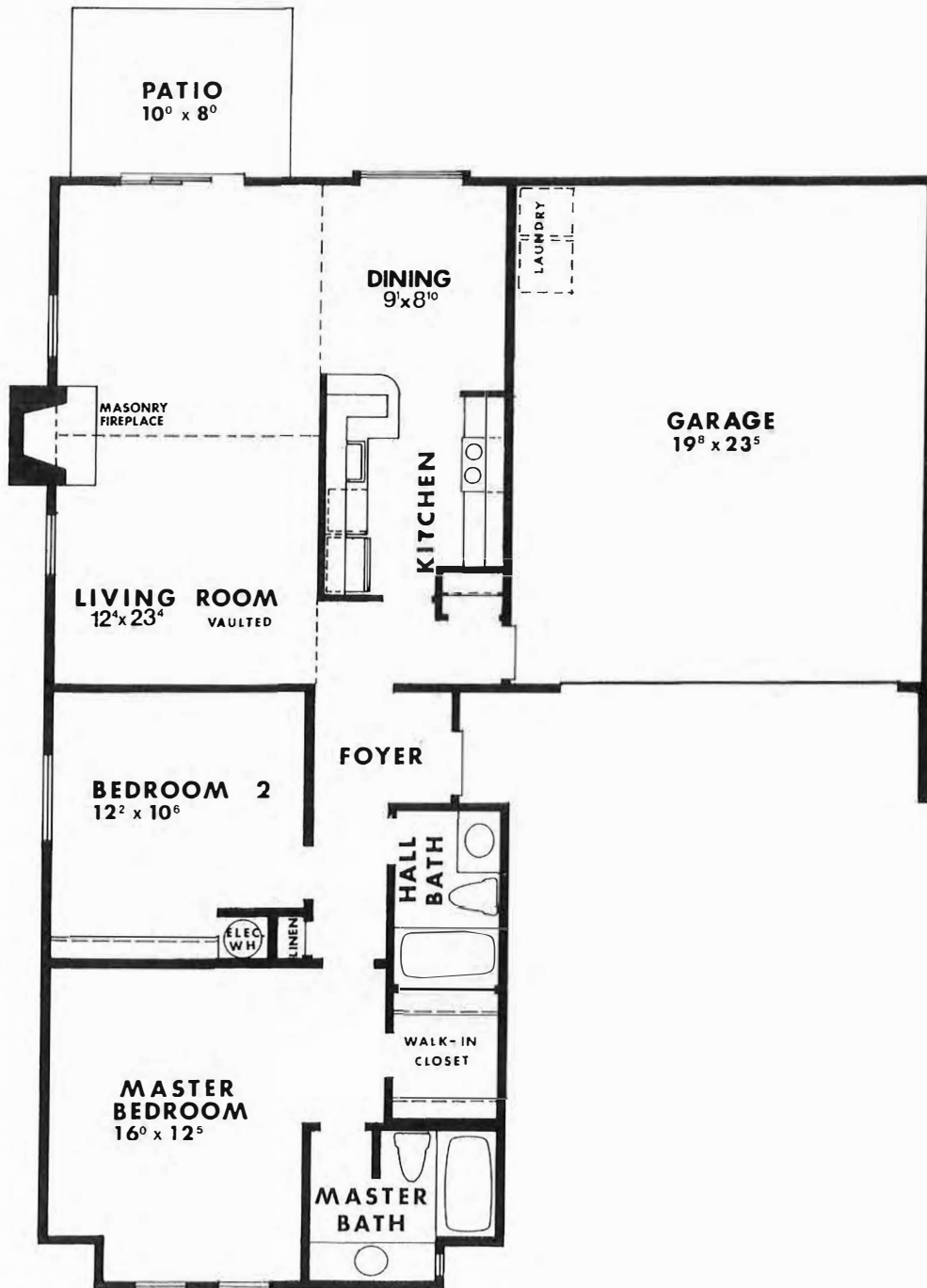
- Masonry Fireplace
- Vaulted Living Room
- Snack Area off Kitchen
- Two Full Baths
- Oversized Garage
- Covered Entry

summerplace

Northeast 148th and Halsey Streets
Portland, Oregon

Hillman Properties
NORTHWEST

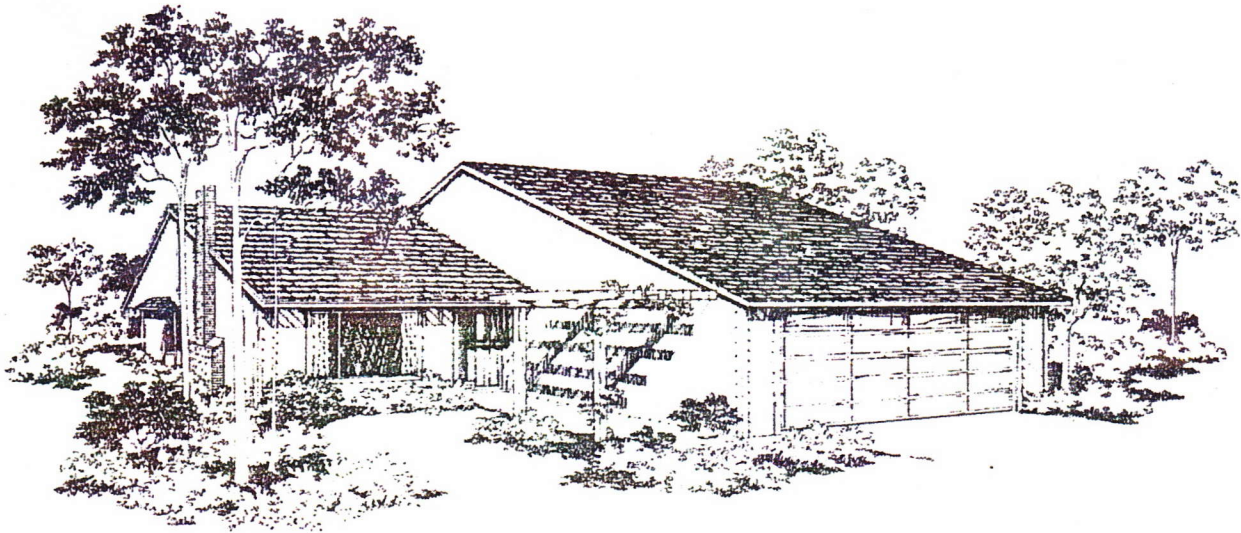
Developers of King City, Summerfield, The
Highlands, Summerplace and Fairway Village



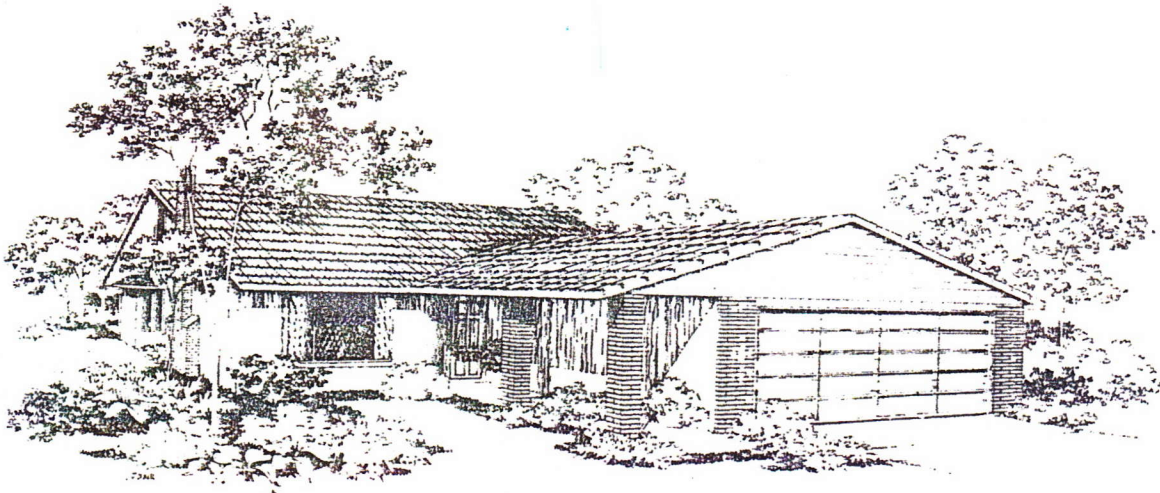
The Crestwood

1121 SQ. FT.

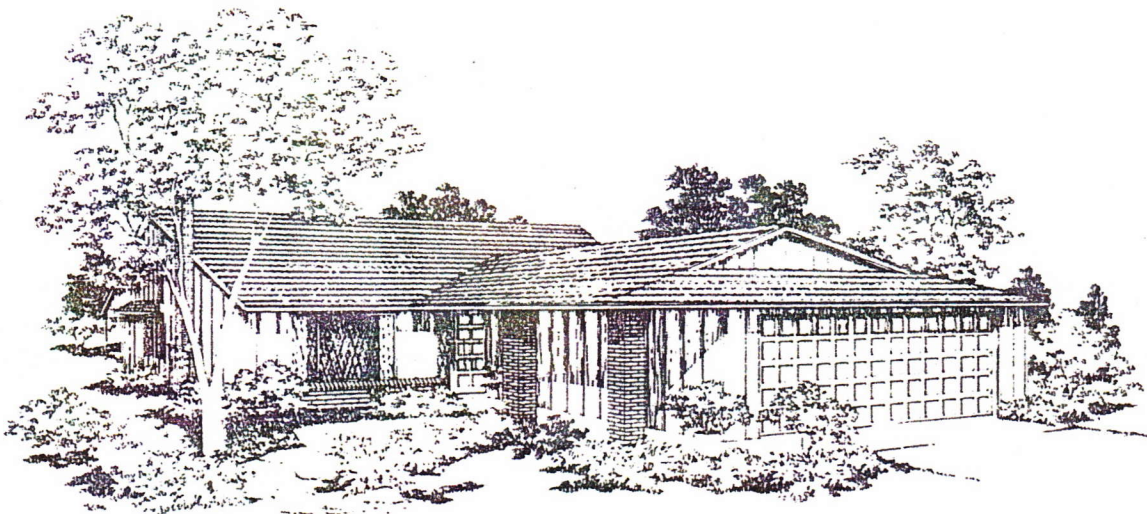
In our effort to constantly update and improve our designs, we reserve the right to modify or change plans, specifications, features, and prices without prior notice. Room sizes are approximate.



The DUNTHORPE — Model Elevation A



The DUNTHORPE — Model Elevation B



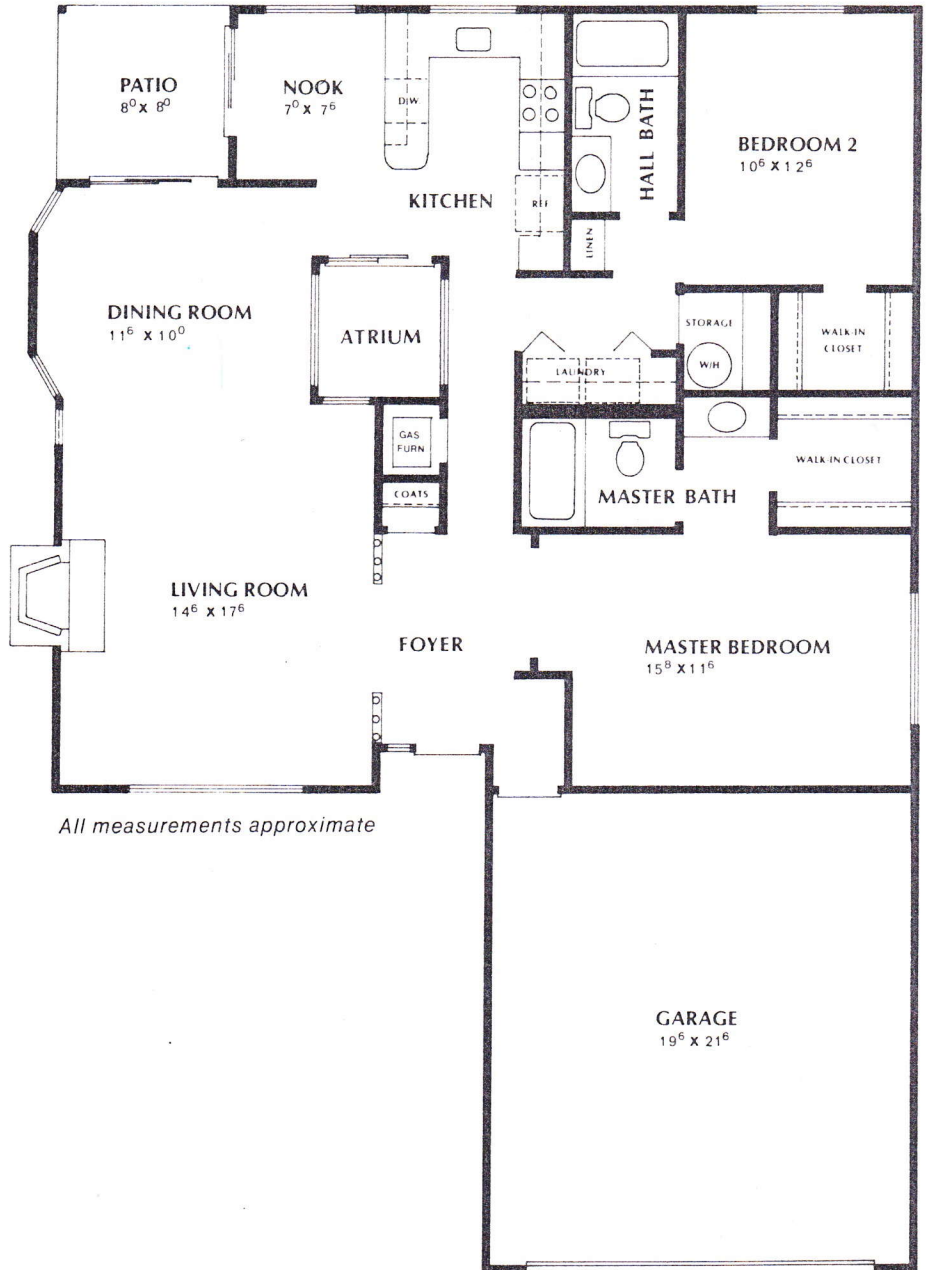
The DUNTHORPE — Model Elevation D

ALL ARTISTS CONCEPTIONS OF EXTERIOR ELEVATIONS INCLUDE OPTIONAL FEATURES.

the
Dunthorpe

Special Features:

- 1375 sq. ft. with Atrium
- Covered Patio
- Central Atrium
- Large Master Suite
- Vaulted Living Room
- Bay Window Dining Room
- Walk-in Closet
- Masonry Fireplace
- Breakfast Nook
- Storage Closet



All measurements approximate



Another Good Living Project

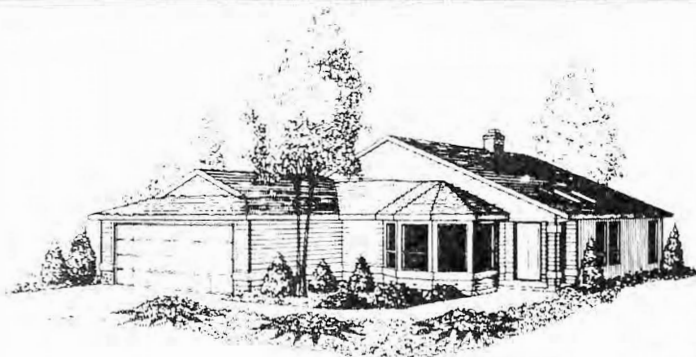
of Tualatin Development Company, Inc.

Northeast 148th and Halsey Streets

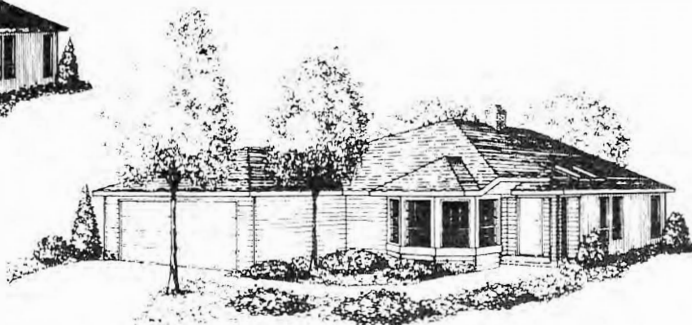
SALES BY
REPUBLIC REAL ESTATE, Realtors

In our effort to constantly update and improve our designs, we reserve the right to modify or change plans, specifications, features, and prices without prior notice. Room sizes are approximate.

THE EDGEWATER



-Model Elevation A



-Model Elevation B

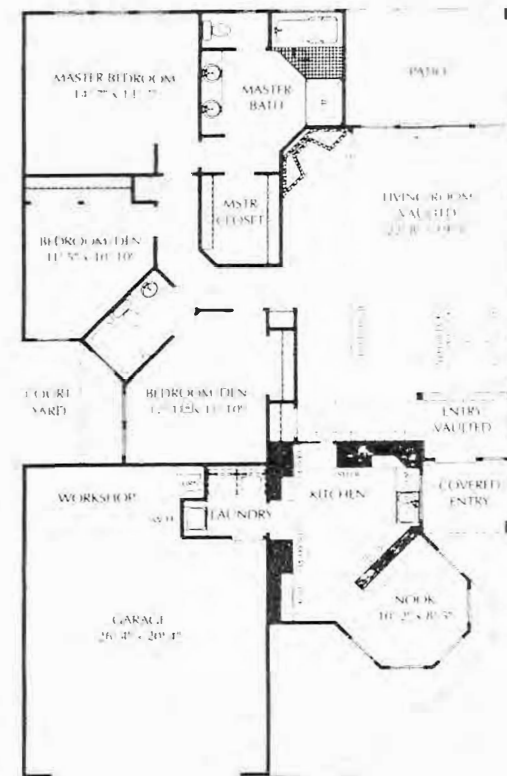
All artist's conceptions of exterior elevations may include optional features.

SPECIAL FEATURES:

- 1696 Sq. Ft. Living Area
- Vaulted Living, Dining, and Entry Area
- Floor-to-Ceiling Masonry Fireplace
- Dramatic Kitchen/Breakfast Nook with Snack Bar
- Large Covered Patio
- Custom Oak or European Cabinets
- Jenn-Air Appliances
- Three Bedrooms / Two Baths
- Tile or Oak Entry
- Master Suite with Luxury Bath
- Two-Car Finished Garage with Workshop Area
- Laundry Room with LaundryTray
- Forced Air Gas Furnace
- Garage Door Opener
- Dead Bolt Door Lock

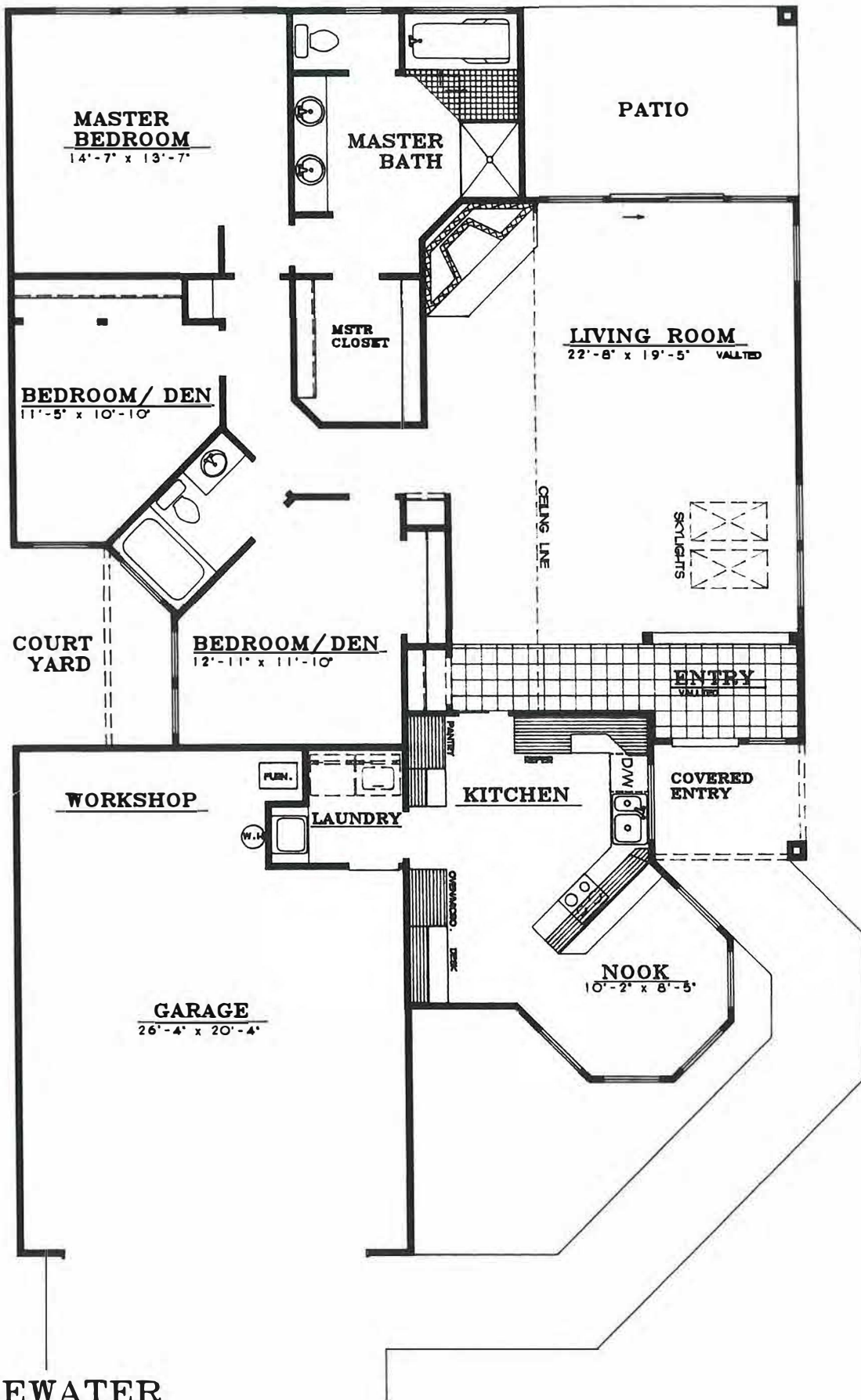


In our effort to constantly update and improve our designs, we reserve the right to modify or change plans, specifications, features, and prices without prior notice. Room sizes are approximate.



1696 SQUARE FEET

Hillman Properties Northwest
 Developers of King City, Summerfield, Summerplace,
 Fairway Village and The Highlands



EDGEWATER
1696 SQ.FT.

The Englewood

2059 SQ. FT.



All artist's conceptions of exterior elevations may include optional features.

Special Features:

- 2059 Square Feet Living Area
- Formal Dining Room
- Bay Window Kitchen with Snack Bar and Nook
- Oak or European Cabinets
- Family Room
- Vaulted Living Room
- Two Masonry Fireplaces
- Three Bedrooms / Two Baths
- Large Master Suite with Mirrored Doors at Wardrobe
- Large Bath with Oversize Tub with Whirlpool and Skylighted Shower
- Separate Laundry Room / Sink
- Formal Gallery / Entry
- Wood or Tile Foyer and Gallery
- Storage Area in Garage
- Covered Patio or Deck
- Front Decorative Brick Veneer

summerplace

Northeast 148th and Halsey Streets
Portland, Oregon

Hillman Properties
NORTHWEST

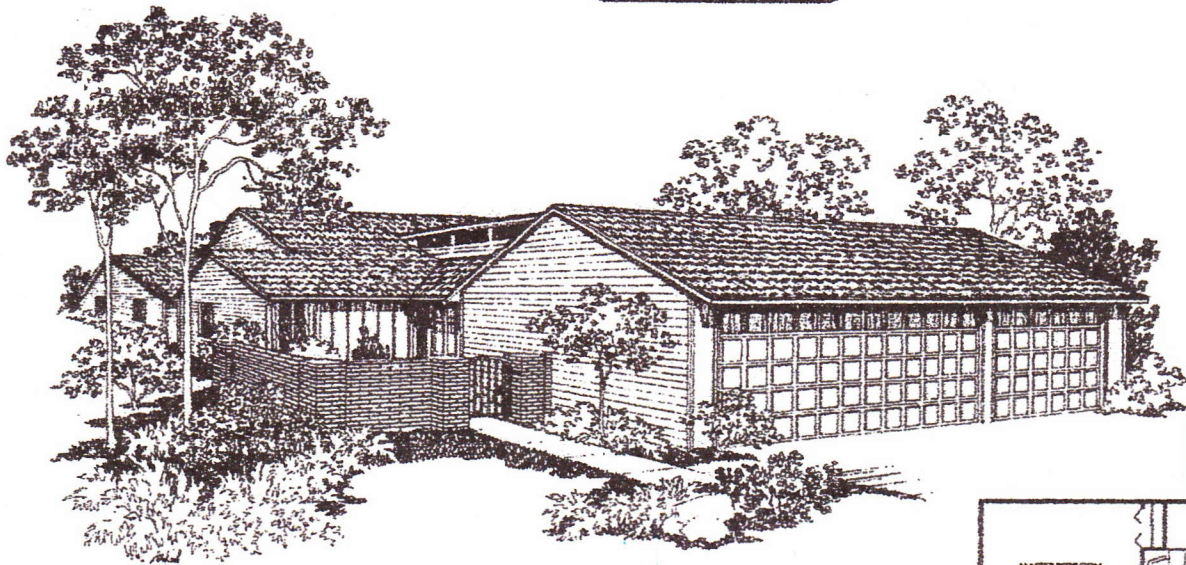
Developers of King City, Summerfield, The
Highlands, Summerplace and Fairway Village



The Englewood

2059 SQ. FT.

In our effort to constantly update and improve our designs, we reserve the right to modify or change plans, specifications, features, and prices without prior notice. Room sizes are approximate.

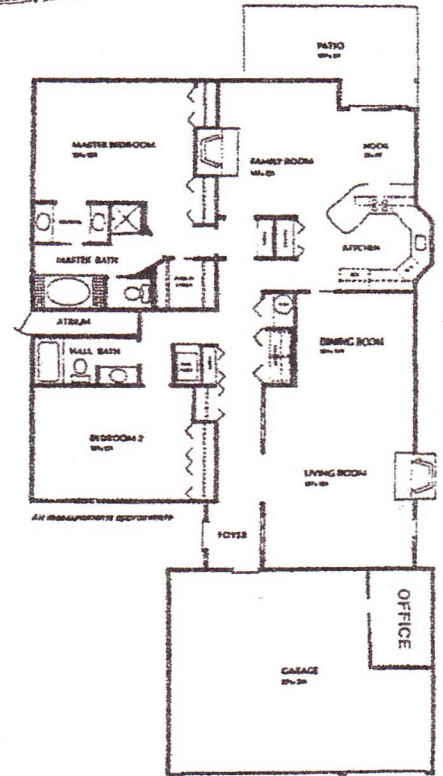


The FONTAINE -

It Really Has Everything!

LOCATION: Summerplace
 SQUARE FEET:
 BEDROOMS: 2-Large
 BATHS: 2
 FAMILY ROOM: Yes
 APPLIANCES: Range, D.W.
 Disposal

PRICE: ~~177,000~~
 AGE:
 FIREPLACE: Two
 GARAGE: Triple
 HEAT: F.A.G./A.C.
 ROOF: Comp.
 LOT: Large, Irregular



Custom Built Homes 2352 NE 151st Ave
 1798 PPH

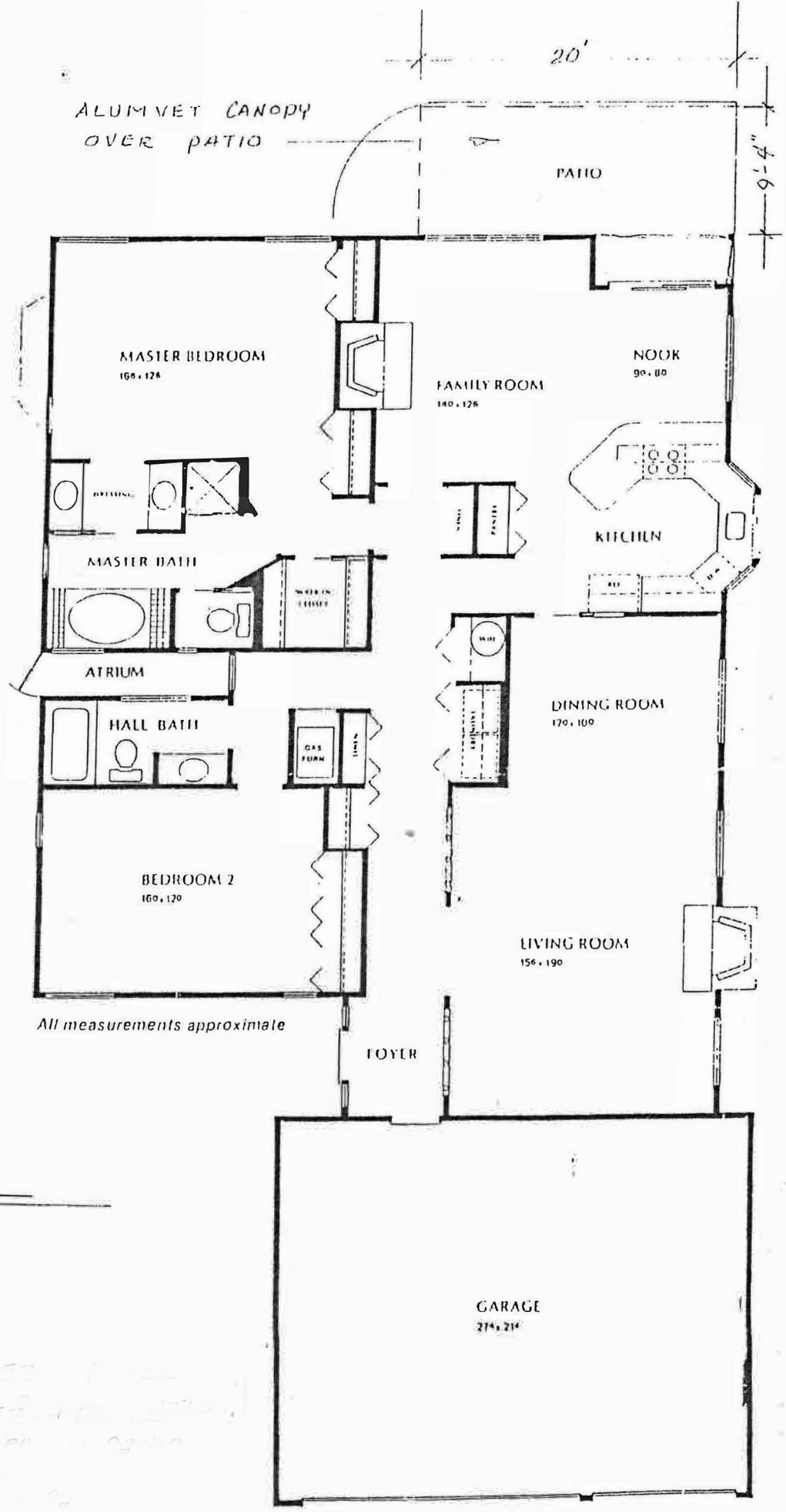
A spacious ranch style home on large treed lot. This home has style, elegance, comfort and is just the right size to fill your retirement needs. If you need an office plus a tremendous amount of storage — two pantries, double closets and a walk-in in the large master suite and more — this is the home for you!

CALL SUMMERPLACE: OFFICE 257-0731



Handwritten mark resembling a stylized 'X' or signature.

The Fontaine



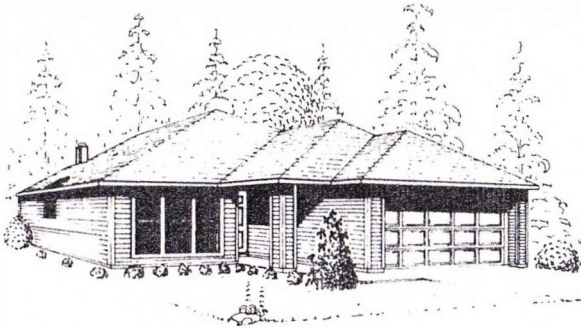
- pecial Features:*
- 1912 sq. ft.
 - Triple Garage
 - Vaulted Living Room
 - Master Bedroom Suite
 - Double Vanities
 - Walk-in Closet
 - Oversized Kitchen
 - Breakfast Nook
 - Atrium
 - Two Masonry Fireplaces
 - Abundant Storage

All measurements approximate

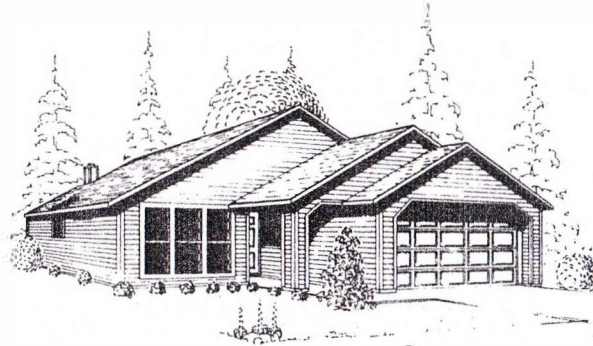
EXHIBIT "A"

0130 N.E. 157 Place
01301 N.E. 157 Place
01301 N.E. 157 Place

THE GRANVILLE



-Model Elevation A

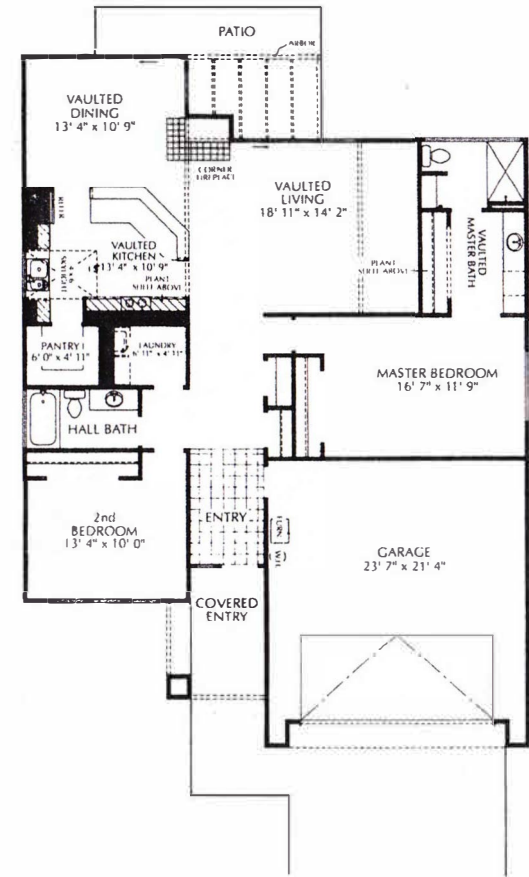


-Model Elevation B

All artist's conceptions of exterior elevations may include optional features.

SPECIAL FEATURES:

- 1454 Sq. Ft. Living Area
- Kitchen Features Vaulted Ceiling, Skylight and Island Cooking Area
- Custom Oak or European Cabinets
- Walk-in Pantry
- Vaulted Dining and Living Area
- Oversized Master Suite with Vaulted Bath Area
- Two Bedrooms/Two Baths
- Corner Tile Fireplace
- Forced Air Gas Furnace
- Laundry Room
- Covered Entry
- Generous Storage Areas
- Dead Bolt Door Lock
- Garage Door Opener
- Oak or Tile Entry



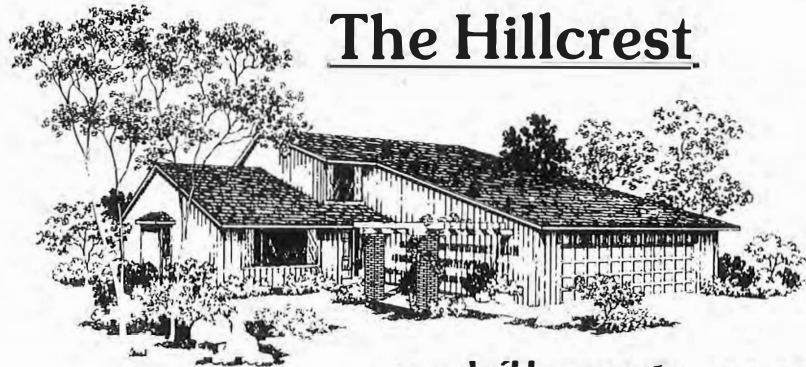
1454 SQUARE FEET



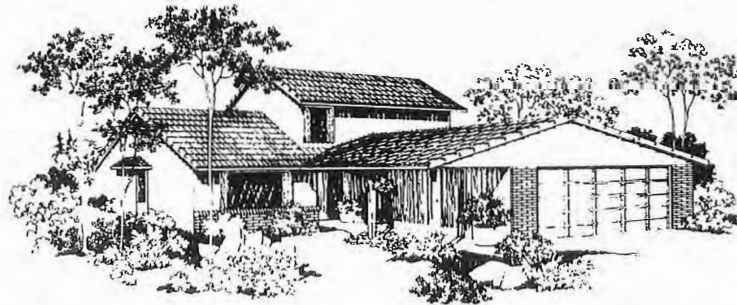
In our effort to constantly update and improve our designs, we reserve the right to modify or change plans, specifications, features, and prices without prior notice. Room sizes are approximate.

Hillman Properties Northwest
 Developers of King City, Summerfield, Summerplace,
 Fairway Village and The Highlands

The Hillcrest



the hillcrest — Model Elevation A



the hillcrest — Model Elevation B



the hillcrest — Model Elevation D

ALL ARTISTS CONCEPTIONS OF EXTERIOR ELEVATIONS INCLUDE OPTIONAL FEATURES.

Special Features:

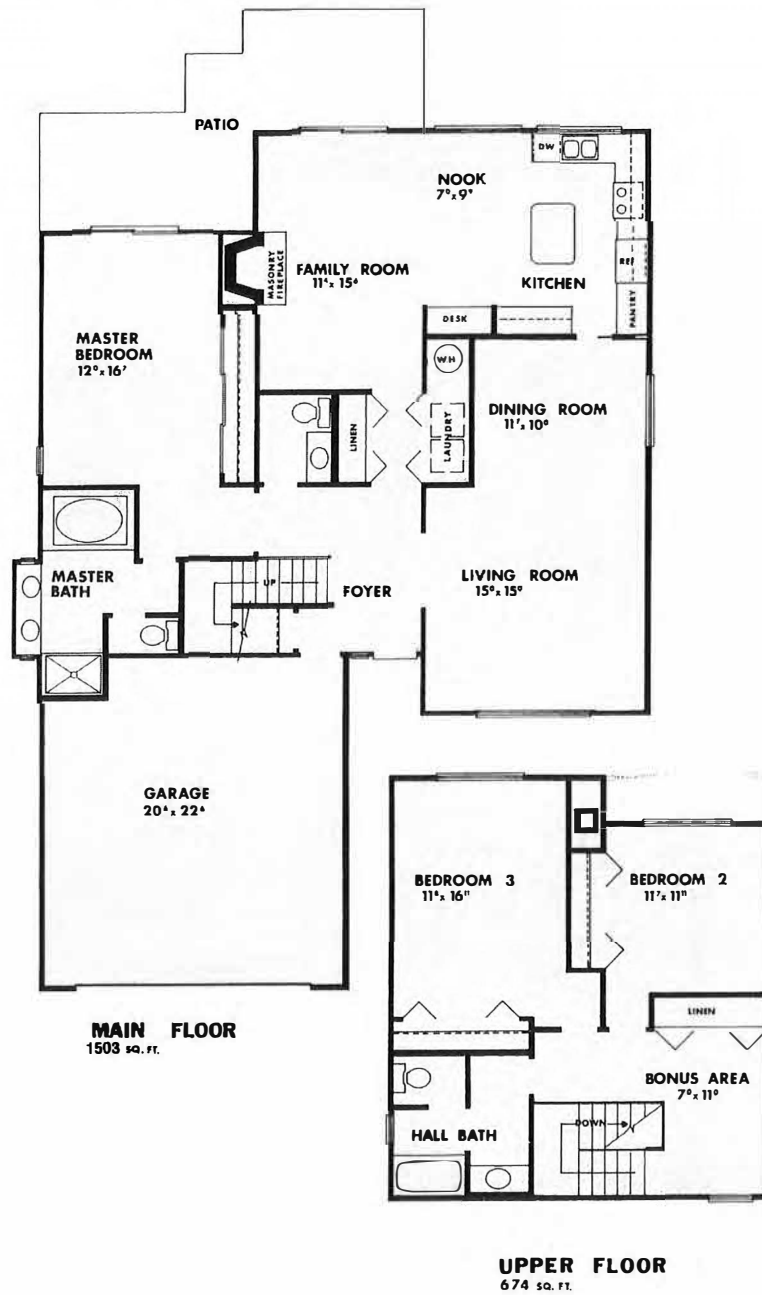
- 2157 sq. ft.
- Three Bedrooms
- Family Room
- Bonus Area
- Vaulted Living Room
- Covered Patio
- Masonry Fireplace
- Two and Two Thirds Baths
- Abundant Storage

summerplace

Northeast 148th and Halsey Streets
Portland, Oregon

Hillman Properties
NORTHWEST

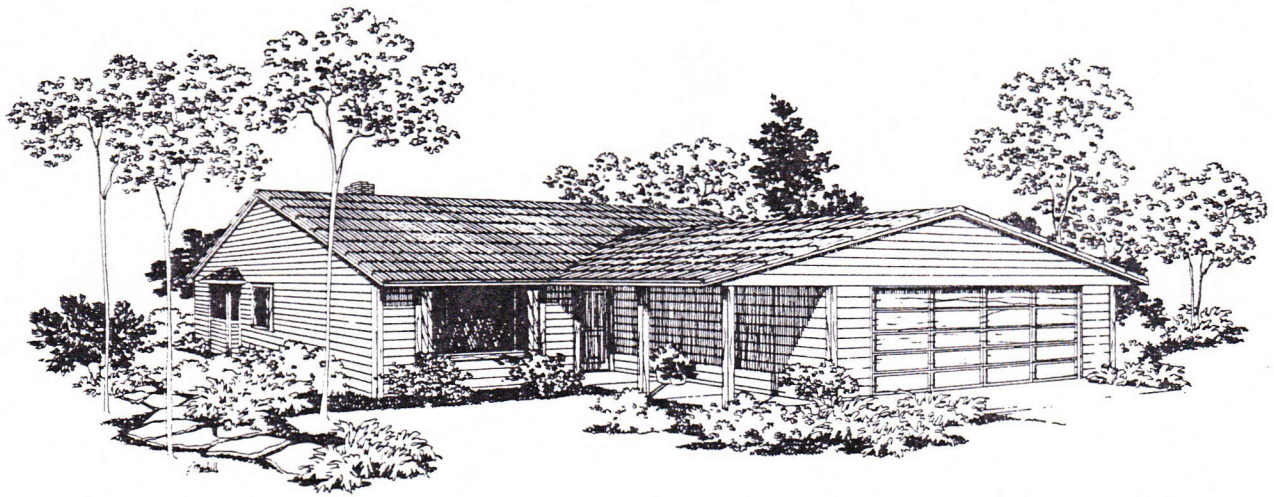
Developers of King City, Summerfield, The
Highlands, Summerplace and Fairway Village



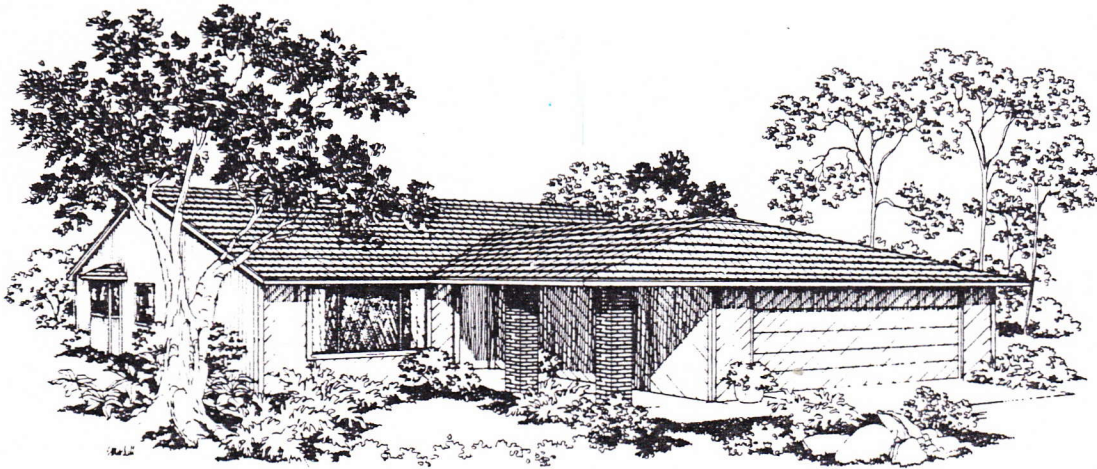
The Hillcrest

2157 SQ. FT.

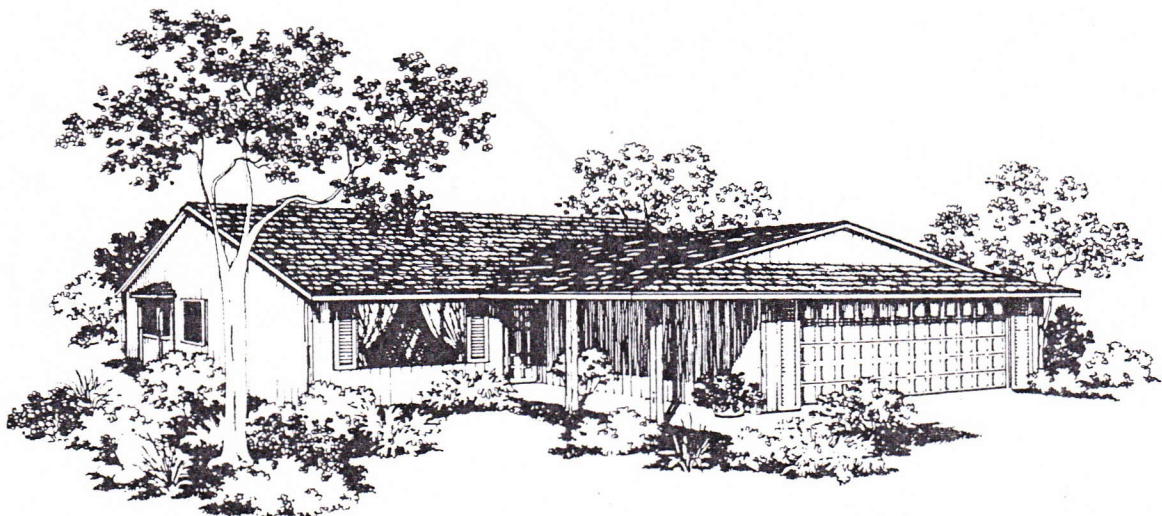
In our effort to constantly update and improve our designs, we reserve the right to modify or change plans, specifications, features, and prices without prior notice. Room sizes are approximate.



The LAURELHURST — Model Elevation B



The LAURELHURST — Model Elevation C



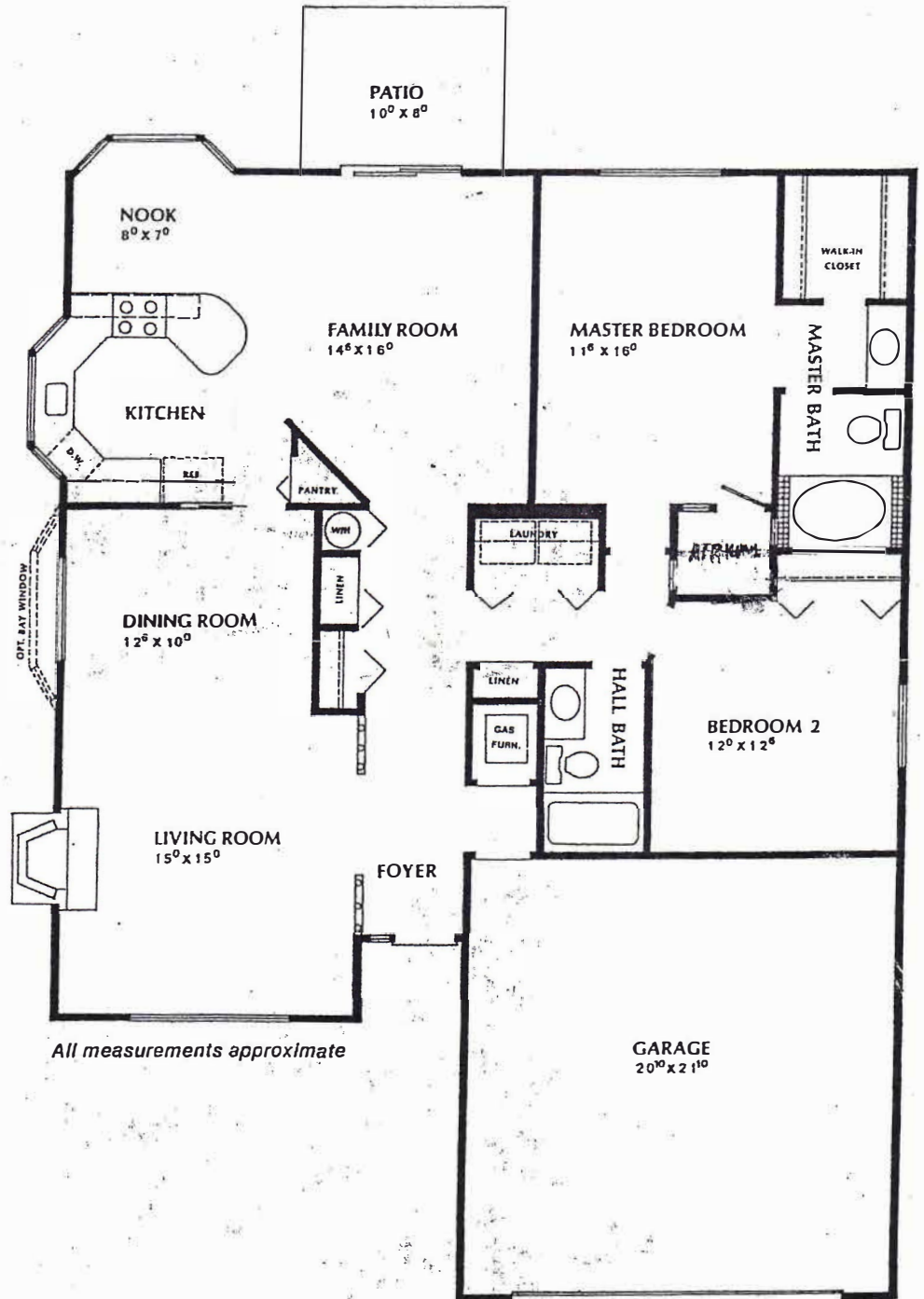
The LAURELHURST — Model Elevation D

ALL ARTISTS CONCEPTIONS OF EXTERIOR ELEVATIONS INCLUDE OPTIONAL FEATURES.

the
Laurelhurst

Special Features:

- 1582 sq. ft.
- Atrium
- Fireplace
- Exciting Kitchen
- Master Bedroom Suite
- Walk-in Closet
- Vaulted Living Room Ceiling
- Formal Entry
- Kitchen Nook



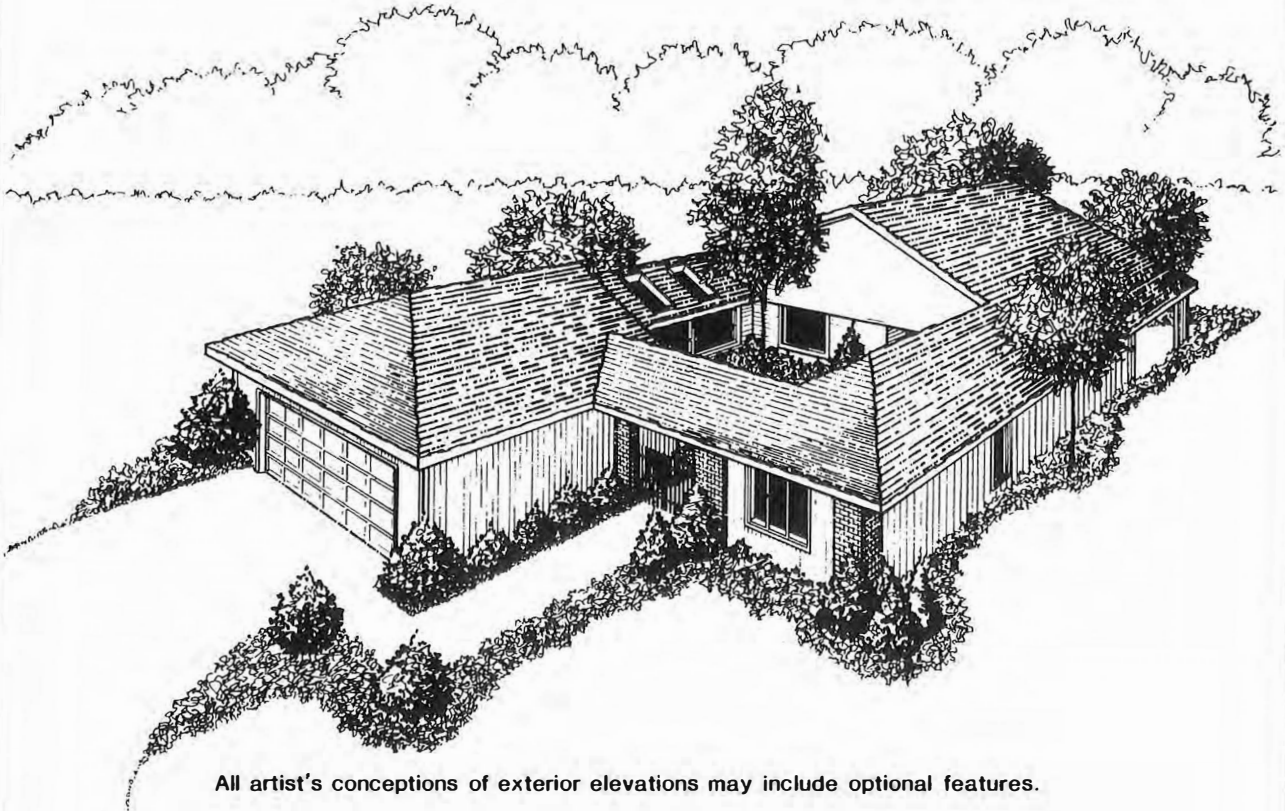
All measurements approximate



Another Good Living Project
of Tualatin Development Company, Inc.
Northeast 148th and Halsey Streets

SALES BY
PRESTIGE PROPERTIES, Realtors

The Meadows



All artist's conceptions of exterior elevations may include optional features.

Special Features:

- 1636 sq. ft. Living Area
- Master Suite
- Three Bedrooms (or Two Bedrooms plus Family Room), Two Baths
- Private Courtyard Entry
- Skylights
- Two Covered Patios
- Large Custom Kitchen with Microwave Oven
- Vaulted Ceilings
- Forced Air Gas Furnace
- Masonry Fireplace
- Machine Brocade Ceilings
- Tile or Oak Entry
- Custom Oak Cabinets
- Wood Wrapped Windows
- Deadbolt Door Lock
- Brass Hardware

summerplace

Northeast 148th and Halsey Streets
Portland, Oregon



HAYDEN CORPORATION

Developers of King City, Summerfield,
Summerplace and Fairway Village

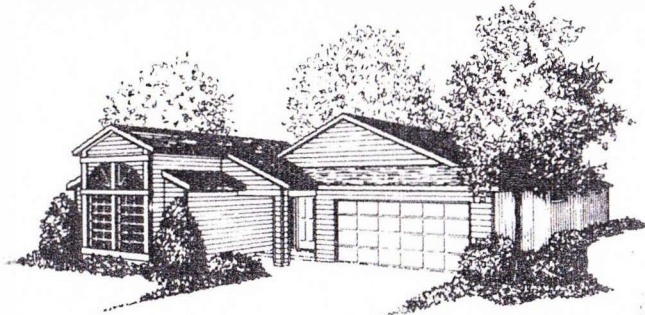


The Meadows

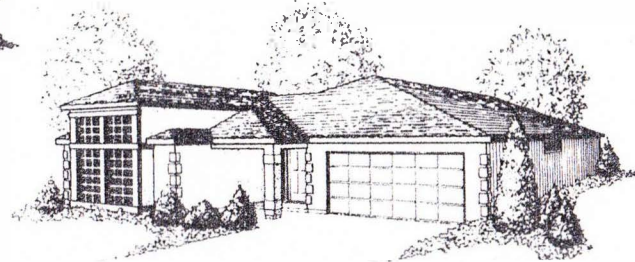
1636 SQ. FT.

In our effort to constantly update and improve our designs, we reserve the right to modify or change plans, specifications, features, and prices without prior notice. Room sizes are approximate.

THE MUIRFIELD



-Model Elevation A

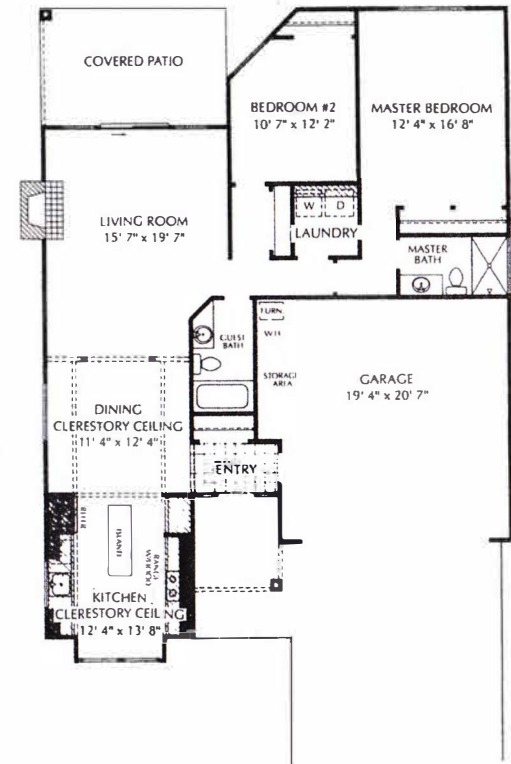


-Model Elevation B

All artist's conceptions of exterior elevations may include optional features.

SPECIAL FEATURES:

- 1314 Sq. Ft. Living Area
- Vaulted Designer Kitchen / Dining Area with Clerestory Windows
- Oversized Master Suite
- Two Bedrooms / Two Baths
- Large Covered Patio
- Custom Oak or European Cabinets
- Masonry Fireplace
- Forced Air Gas Furnace
- Tile or Oak Entry
- Wood-Wrapped Windows
- Laundry Room
- Storage Space in Garage
- Dead Bolt Door Lock
- Garage Door Opener



1314 SQUARE FEET

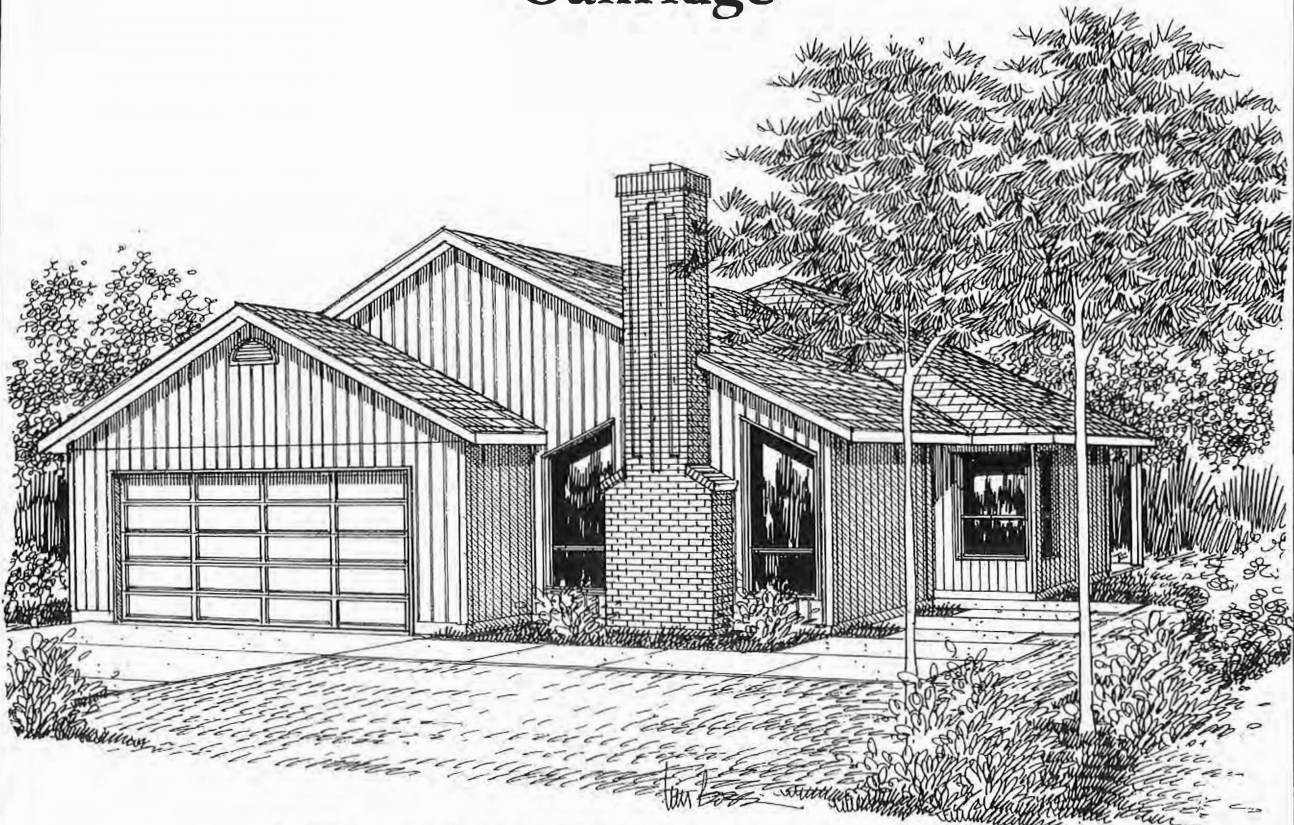


NE 148th & Halsey Street
Portland, Oregon 97230
503/257-0731

In our effort to constantly update and improve our designs, we reserve the right to modify or change plans, specifications, features, and prices without prior notice. Room sizes are approximate.

Hillman Properties Northwest
Developers of King City, Summerfield, Summerplace,
Fairway Village and The Highlands

Oakridge



All artist's conceptions of exterior elevations may include optional features.

- Choice of 1630 sq. ft. plan with Island Kitchen with Desk and Family Room

—OR—

- 1450 sq. ft. plan with Snack Bar Kitchen with Breakfast Nook and Covered Patio
- Vaulted Living Room
- Formal Dining Room
- Storage Area in Garage
- Masonry Fireplace

- Three Bedrooms/Two Baths
- Separate Laundry Room/Sink
- Forced Air Gas Furnace
- Tile or Oak Entry
- Deadbolt Door Locks
- Brass Hardware
- Machine Brocade Ceilings
- Wood Wrapped Windows

summerplace

Northeast 148th and Halsey Streets
Portland, Oregon

Hillman Properties
NORTHWEST

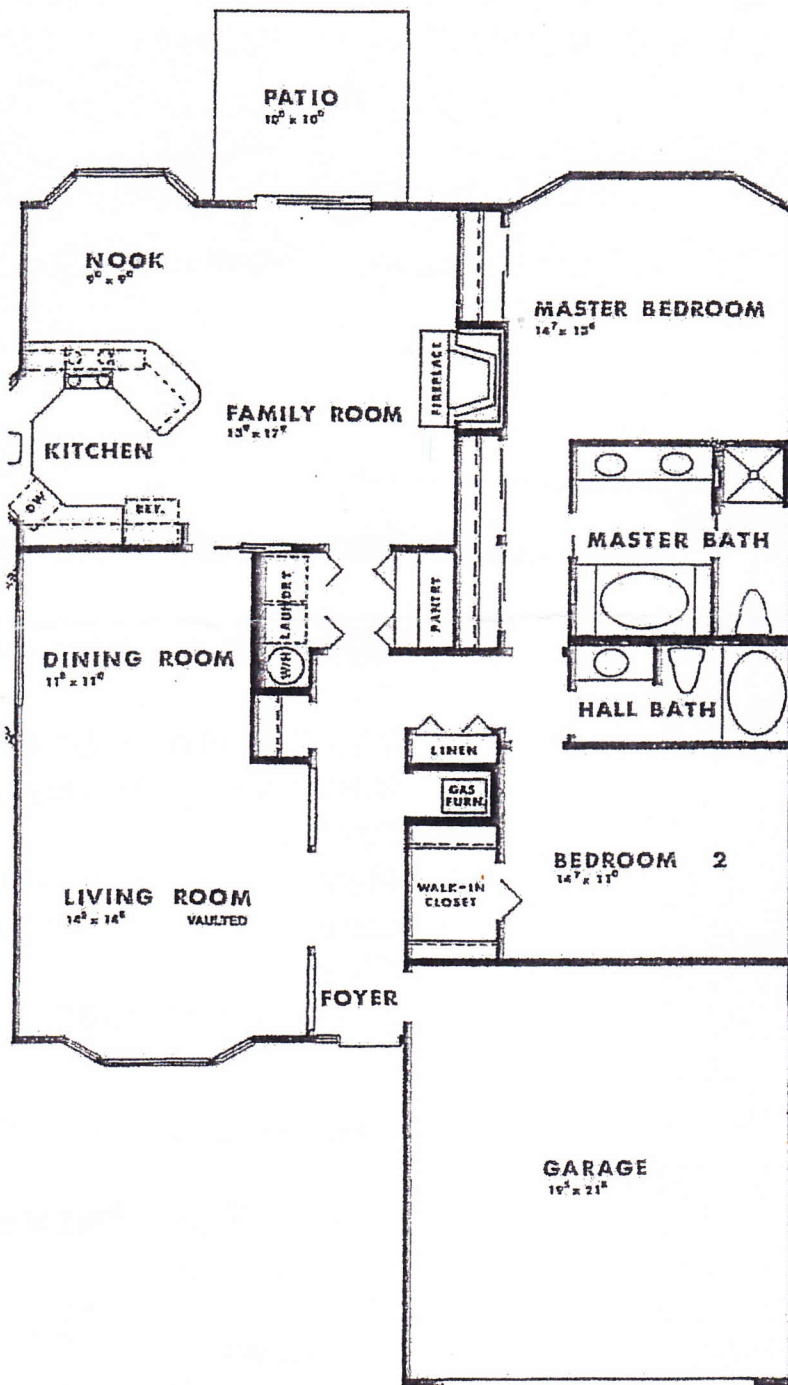
Developers of King City, Summerfield, The
Highlands, Summerplace and Fairway Village



1450 sq. ft. version

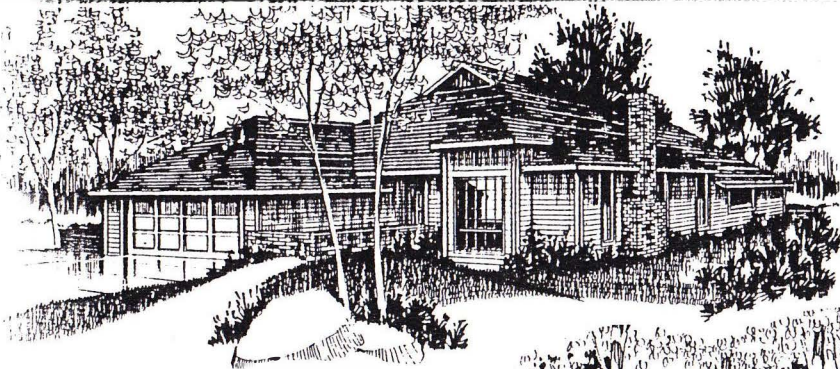
In our effort to constantly update and improve our designs, we reserve the right to modify or change plans, specifications, features, and prices without prior notice. Room sizes are approximate.

PARKVIEW

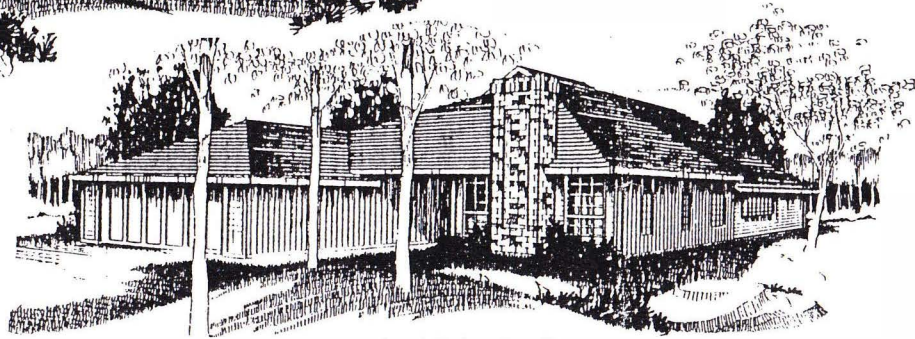


THE PINEHURST

Portland, OR



- Model Elevation A



- Model Elevation B

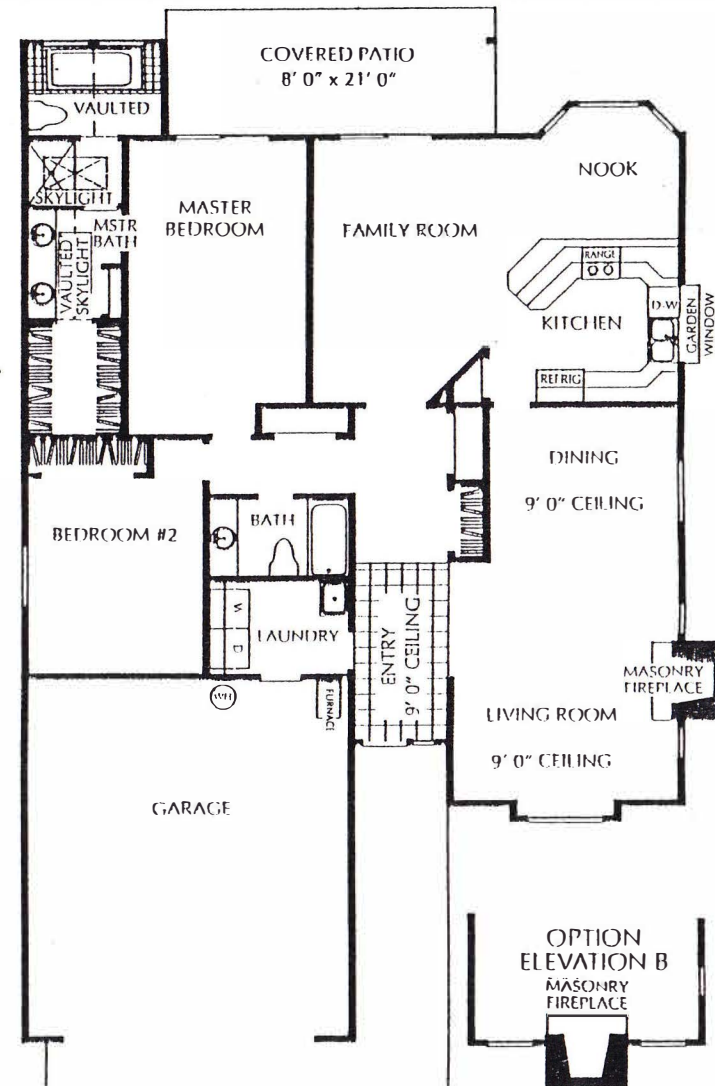
All artist's conceptions of exterior elevations may include optional features.

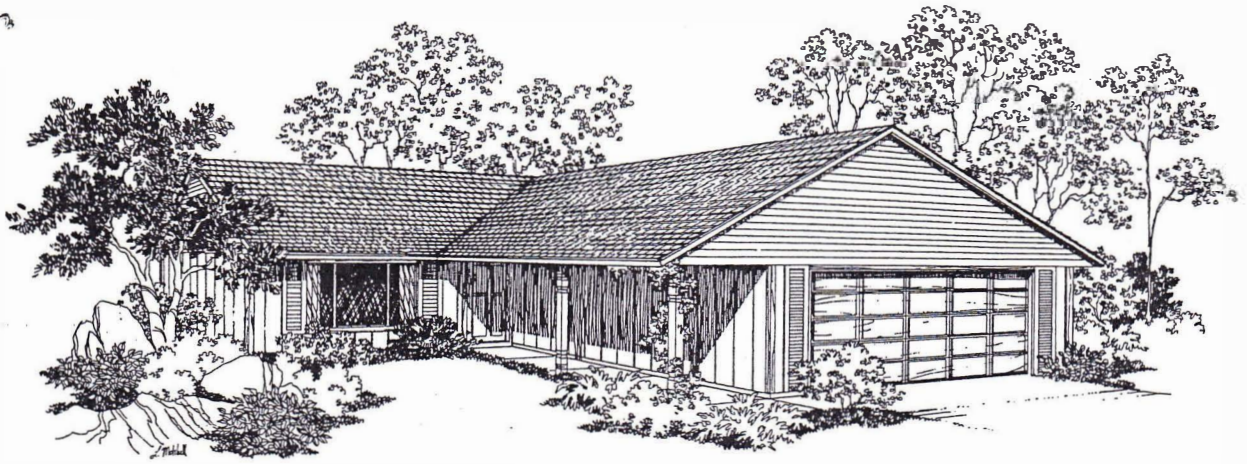
SPECIAL FEATURES:

- 1683 Sq. Ft. Living Area
- Tile or Oak Entry
- Two Bedrooms/Two Baths
- High Ceilings in Entry/Living/Dining
- Vaulted Master Bath with Skylights
- Large Covered Patio
- Masonry Fireplace
- Completed Garage with Door Opener
- Laundry Room with Sink
- Garden Window
- Generous Storage Closets
- Deadbolt Door Locks

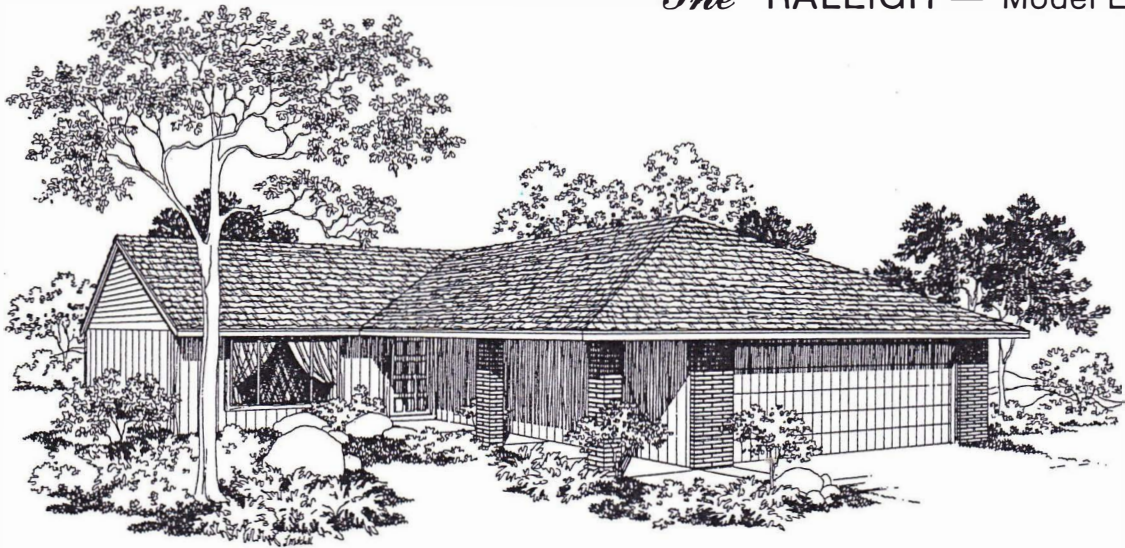


NE 148th & Halsey Street
Portland, Oregon 97230

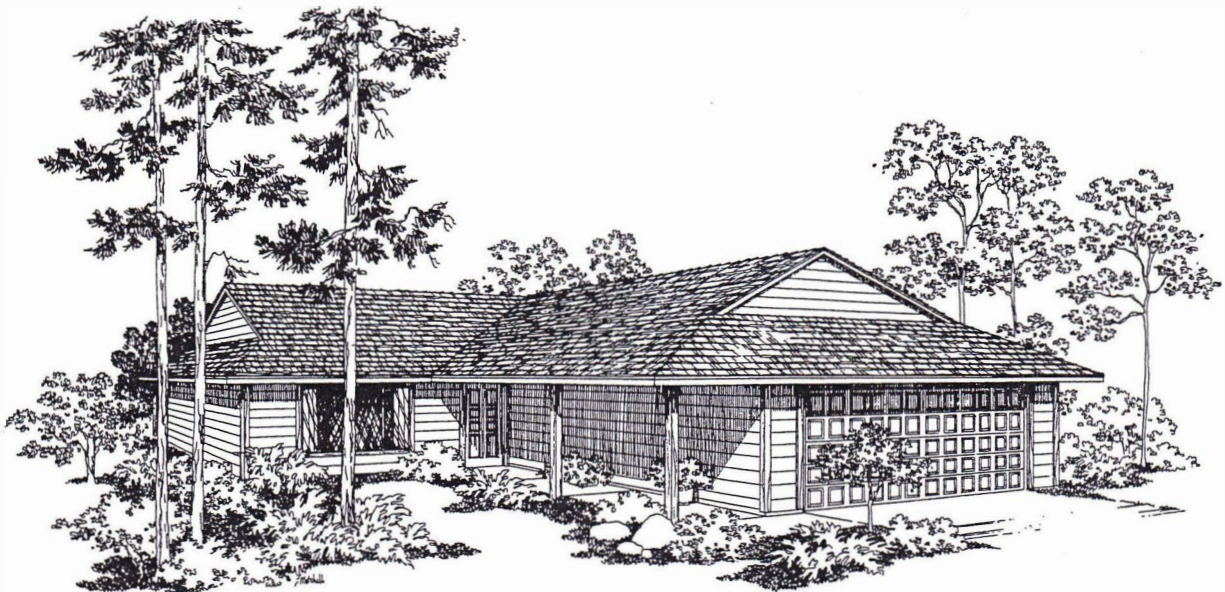




The RALEIGH — Model Elevation B



The RALEIGH — Model Elevation C



The RALEIGH — Model Elevation D

ALL ARTISTS CONCEPTIONS OF EXTERIOR ELEVATIONS INCLUDE OPTIONAL FEATURES.

Special Features:

- 1238 sq. ft.
- Bay Window Dining Room
- Utility Room
- Covered Patio
- Masonry Fireplace
- Formal Entry
- Breakfast Nook
- Covered Entry
- Two Full Baths



All measurements approximate



Another Good Living Project
of Tualatin Development Company, Inc.
Northeast 148th and Halsey Streets

SALES BY
PRESTIGE PROPERTIES, Realtors

The Riviera



SPECIAL FEATURES:

- 1704 Square Feet Living Area
- Tile or Oak Entry
- Two Bedroom/Two Bathrooms
- Vaulted Great Room with Fireplace and Built-in Cabinets
- Large Covered Patio
- Vaulted Master Bedroom Suite with Fireplace
- Completed Garage with Door Opener
- Interior Laundry Room with Sink and Upper Cabinets
- Deadbolt Door Lock
- Skylight Kitchen with European Cabinets and Microwave Oven
- Optional Brick Courtyard
- Modular Closet Shelving



SPECIAL NATURAL CHOICE GAS FEATURES

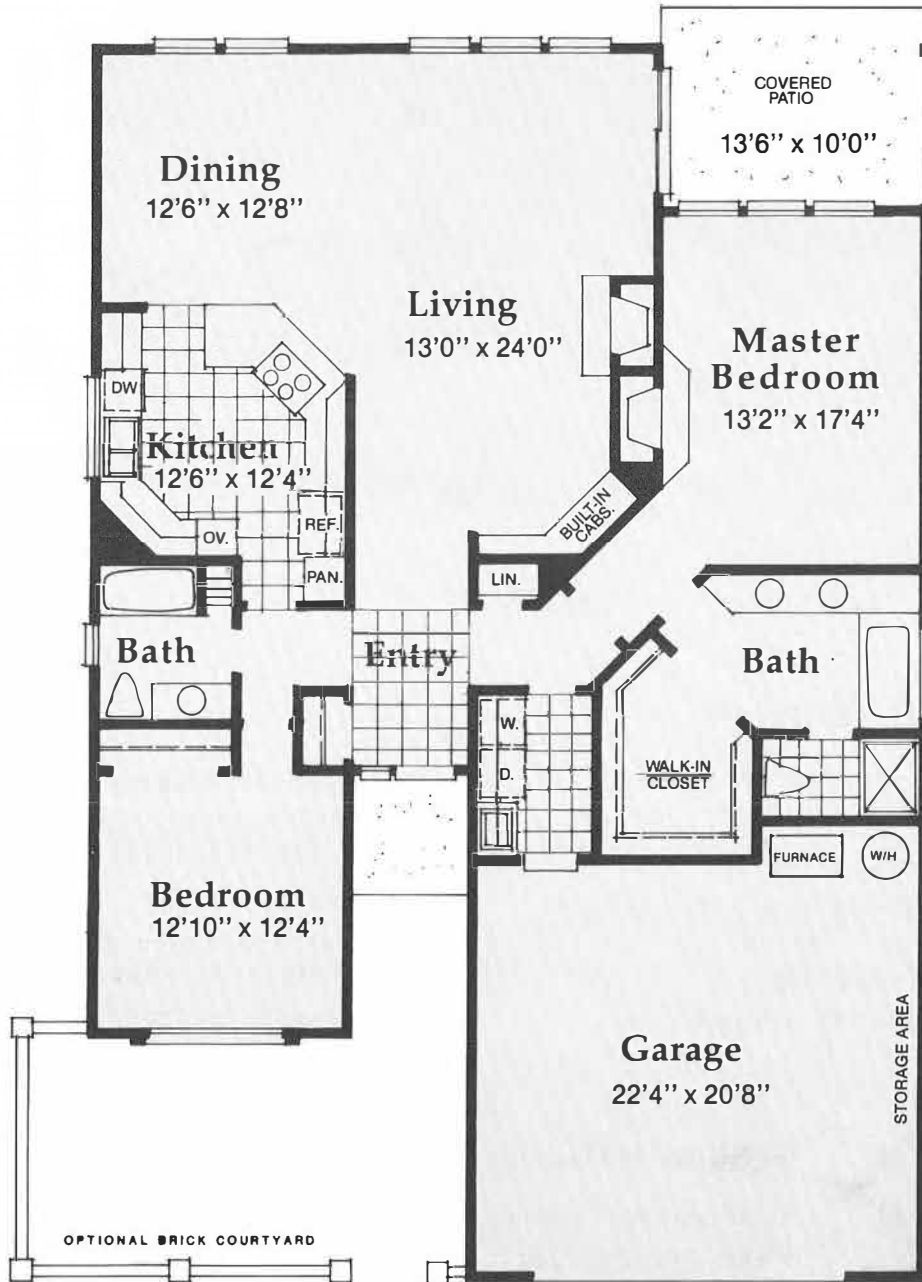
- Gas Jenn Air Cooktop
- High Efficiency Gas Forced Air Furnace
- Fireplace Gas Logs in both Great Room and Master Bedroom
- Gas Hot Water Heater
- Gas Piping for Barbeque at Patio

summerplace

Northeast 148th and Halsey Streets
Portland, Oregon

Hillman Properties
NORTHWEST

Developers of King City, Summerfield, The
Highlands, Summerplace and Fairway Village



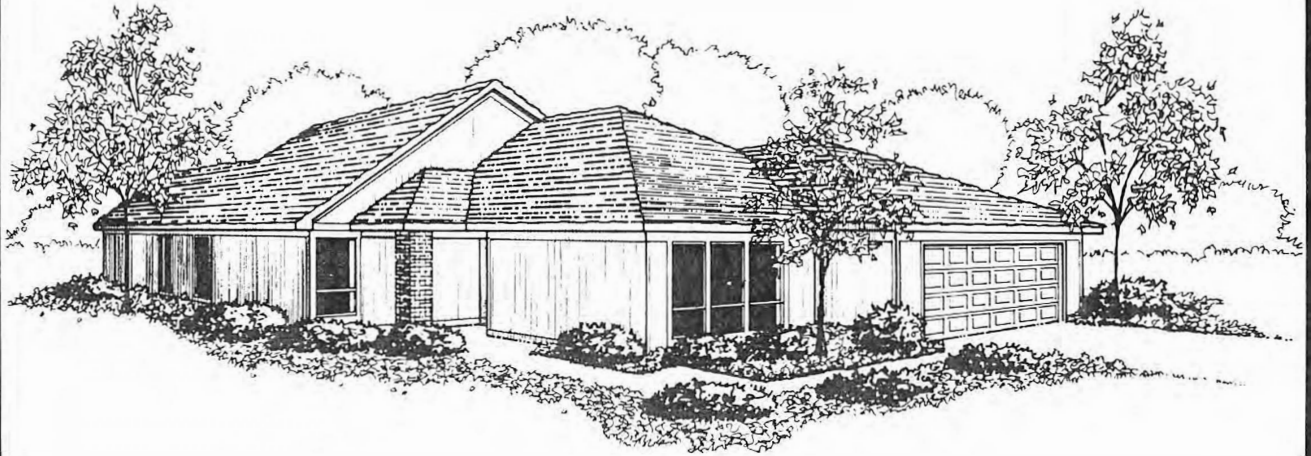
The Riviera

1704 SQ. FT.

In our effort to constantly update and improve our designs, we reserve the right to modify or change plans, specifications, features, and prices without prior notice. Room sizes are approximate.

The Roanoke

1668 SQ. FT.



All artist's conceptions of exterior elevations may include optional features.

Special Features:

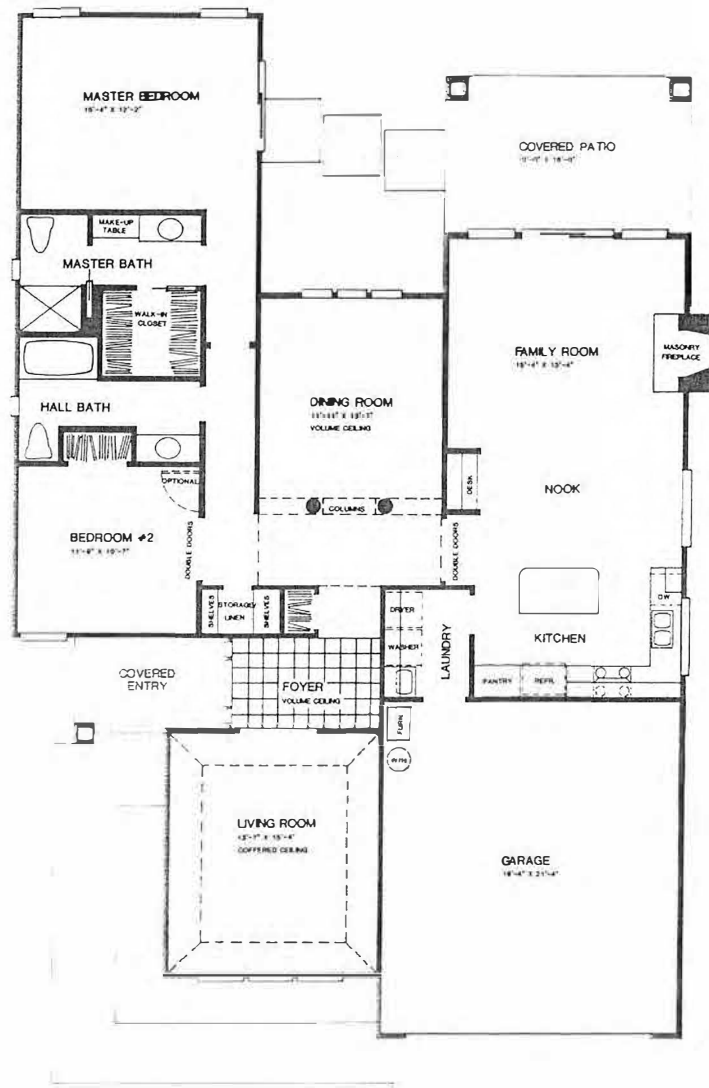
- 1668 sq. ft. Living Area
- Large Formal Dining Room
- Large Kitchen/Nook/Family Area
- Brass Hardware
- Two Bedrooms, Two Baths
- Master Bedroom Suite
- Forced Air Gas Furnace
- Masonry Fireplace
- Machine Brocade Ceilings
- Tile or Oak Entry
- Custom Oak Cabinets
- Wood Wrapped Windows
- Deadbolt Door Lock
- Covered Patio
- Laundry Room
- Vaulted Ceilings

summerplace

Northeast 148th and Halsey Streets
Portland, Oregon



Hayden Corporation
Tualatin Development Division
Serving the adult housing needs of the
Northwest for over 20 years.



The Roanoke

1668 SQ. FT.

In our effort to constantly update and improve our designs, we reserve the right to modify or change plans, specifications, features, and prices without prior notice. Room sizes are approximate.

THE ROYAL OAK



-Model Elevation A



-Model Elevation B

All artist's conceptions of exterior elevations may include optional features.

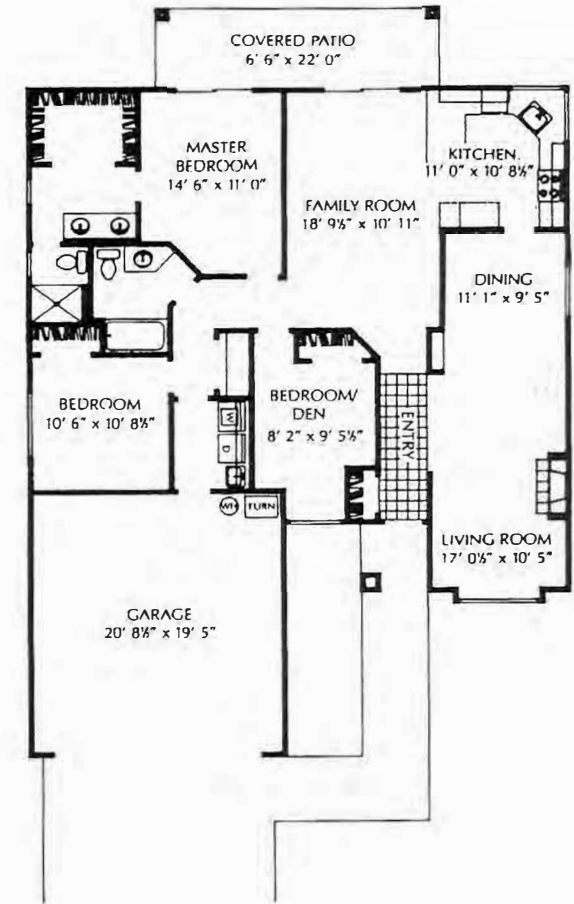
SPECIAL FEATURES:

- 1466 Sq. Ft. Living Area
- Vaulted Living Room and Entry (Elevation "A" Only)
- Large Kitchen/Family Room with Eating Bar
- Formal Dining and Living Room with Bay Window
- Master Bedroom Suite with Walk-in Closet and Double Sink Vanity
- Forced Air Gas Furnace
- Direct Vent High Efficiency Gas Fireplace
- Machine Brocade Ceilings
- Tile or Oak Entry
- Large Covered Patio
- Custom Oak or European Cabinets
- Wood-Wrapped Windows
- Deadbolt Door Locks
- Laundry Room with Sink



NE 148th & Halsey Street
Portland, Oregon 97230
503/257-0731

In our effort to constantly update and improve our designs, we reserve the right to modify or change plans, specifications, features, and prices without prior notice. Room sizes are approximate.



1466 SQUARE FEET

Hillman Properties Northwest
Developers of King City, Summerfield, Summerplace,
Fairway Village and The Highlands

The Salishan



All artist's conceptions of exterior elevations may include optional features.

Special Features:

- 1324 sq. ft. Living Area
- 1424 sq. ft. Living Area with Family Room
- Vaulted Living Room
- Large Kitchen/Nook
- Storage Area In Garage
- Two Bedrooms, Two Baths
- Master Bedroom Suite
- Forced Air Gas Furnace
- Masonry Fireplace
- Machine Brocade Ceilings
- Tile or Oak Entry
- Custom Oak Cabinets
- Wood Wrapped Windows
- Deadbolt Door Lock
- Covered Patio or Family Room
- Laundry Room

summerplace

Northeast 148th and Halsey Streets
Portland, Oregon

Hillman Properties
NORTHWEST

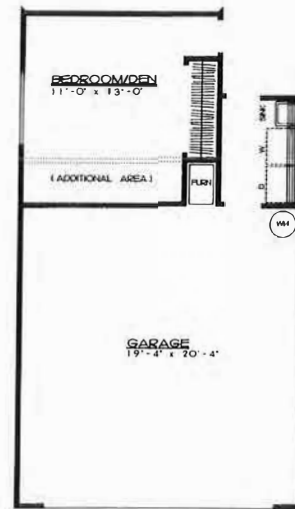
Developers of King City, Summerfield, The
Highlands, Summerplace and Fairway Village



1324 SQ. FT.



Family Room
(optional extra)
additional 100 sq. ft. living area
1424 Total Sq. Ft.

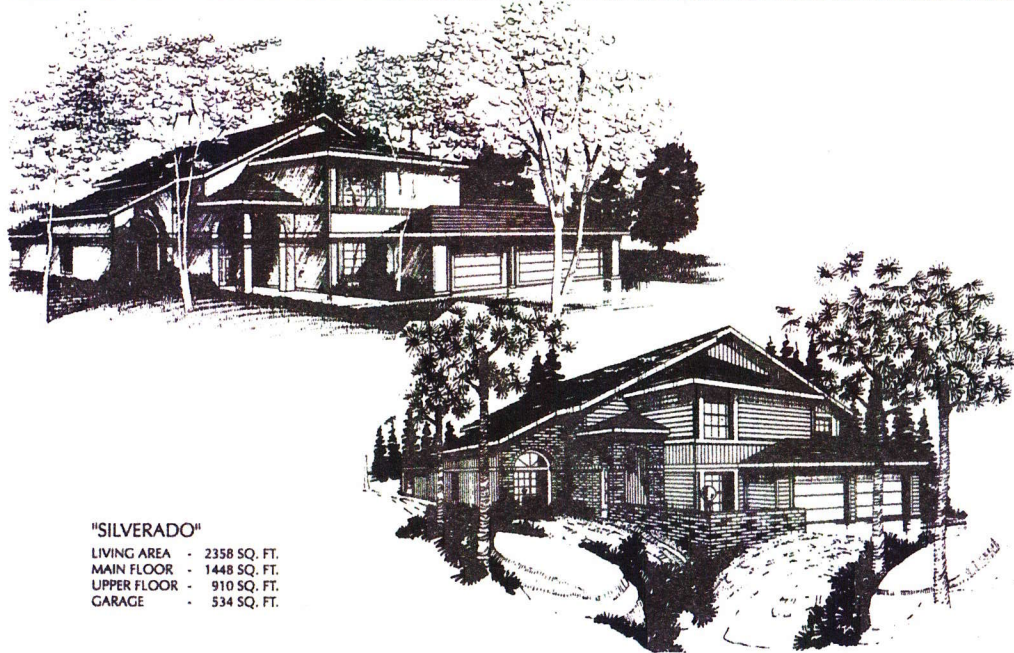


Bedroom/Den
(optional extra)
additional 34 sq. ft. living area
1368 Total Sq. Ft.

The Salishan

In our effort to constantly update and improve our designs, we reserve the right to modify or change plans, specifications, features, and prices without prior notice. Room sizes are approximate.

THE SILVERADO



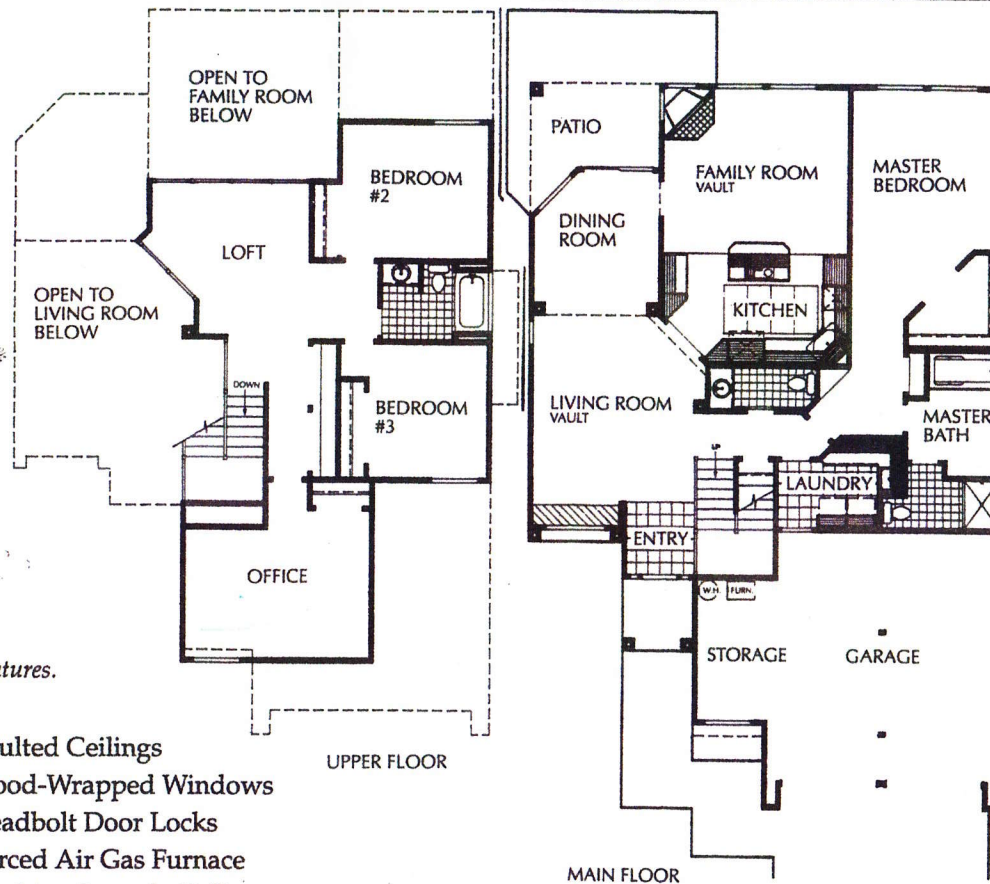
"SILVERADO"

LIVING AREA - 2358 SQ. FT.
 MAIN FLOOR - 1448 SQ. FT.
 UPPER FLOOR - 910 SQ. FT.
 GARAGE - 534 SQ. FT.

All artist's conceptions of exterior elevations may include optional features.

SPECIAL FEATURES:

- 2358 Sq. Ft. Living Area
- Master Bedroom Suite with Skylighted Bath and Walk-In Closet
- 2 1/2 Baths
- Direct Vent High Efficiency Gas Fireplace
- Large Covered Patio or Deck
- Large Garage with Work Space
- Custom Kitchen with Oak or European Cabinets
- Wood or Metal Handrails
- Laundry Room
- Vaulted Ceilings
- Wood-Wrapped Windows
- Deadbolt Door Locks
- Forced Air Gas Furnace
- Machine Brocade Ceilings
- Tile or Oak Entry

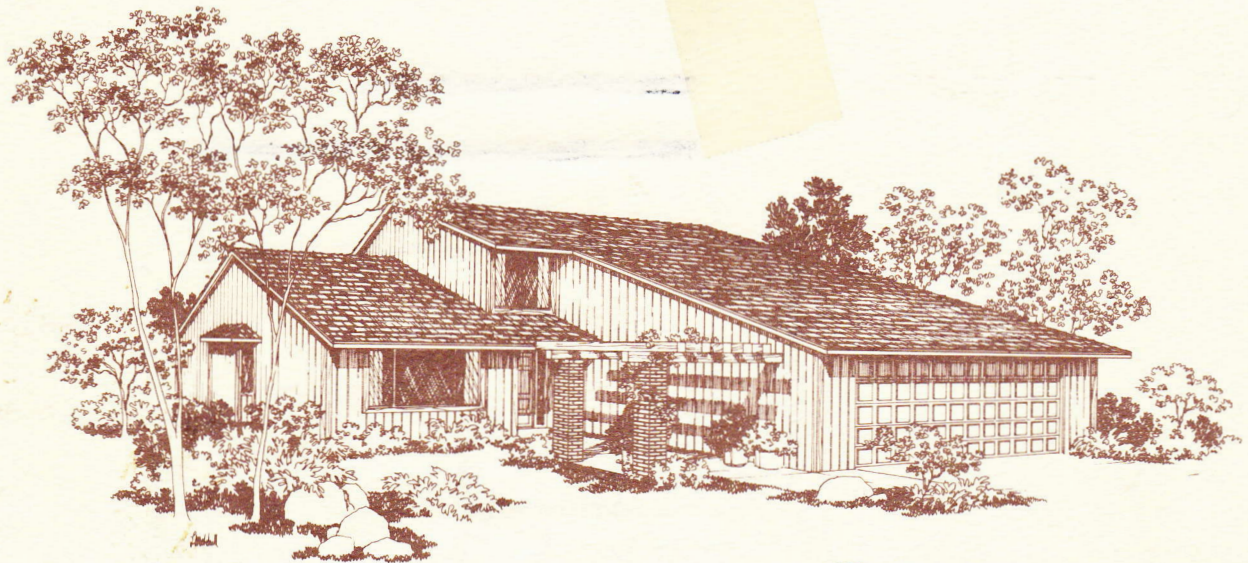


NE 148th & Halsey Street
 Portland, Oregon 97230
 503/257-0731

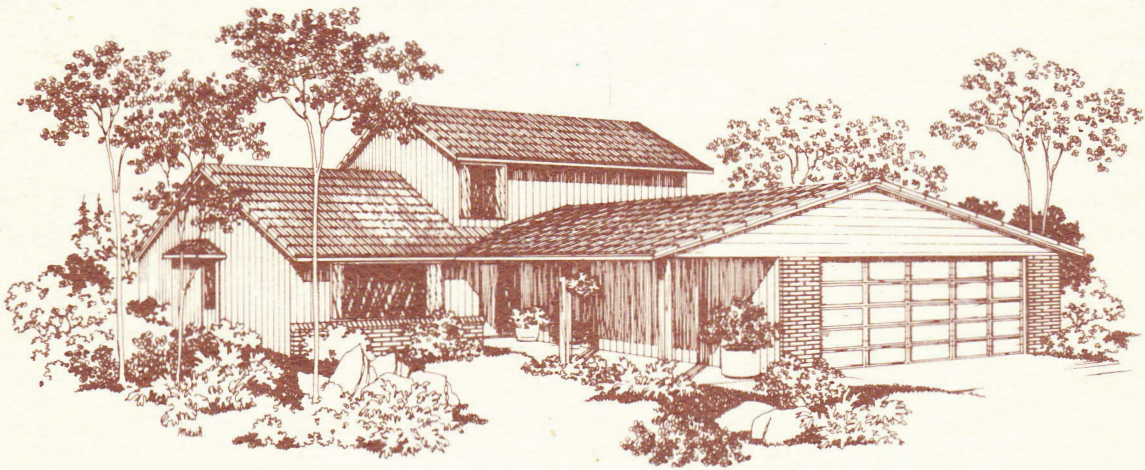
2358 SQUARE FEET

In our effort to constantly update and improve our designs, we reserve the right to modify or change plans, specifications, features, and prices without prior notice. Room sizes are approximate.

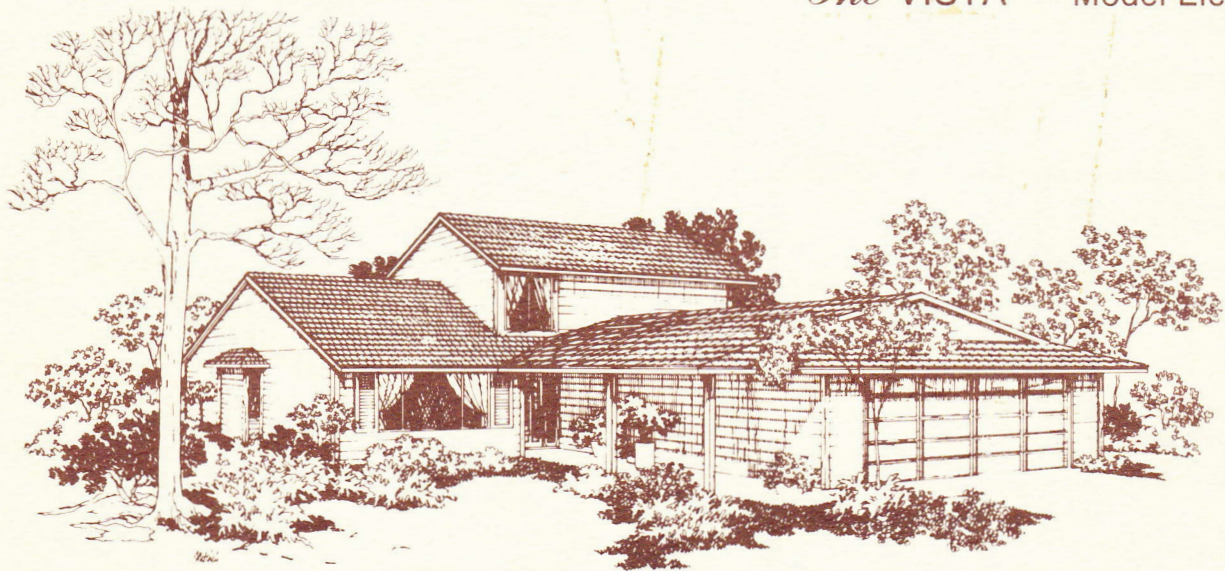
Hillman Properties Northwest
 Developers of King City, Summerfield, Summerplace,
 Fairway Village and The Highlands



The VISTA — Model Elevation A



The VISTA — Model Elevation B



The VISTA — Model Elevation D

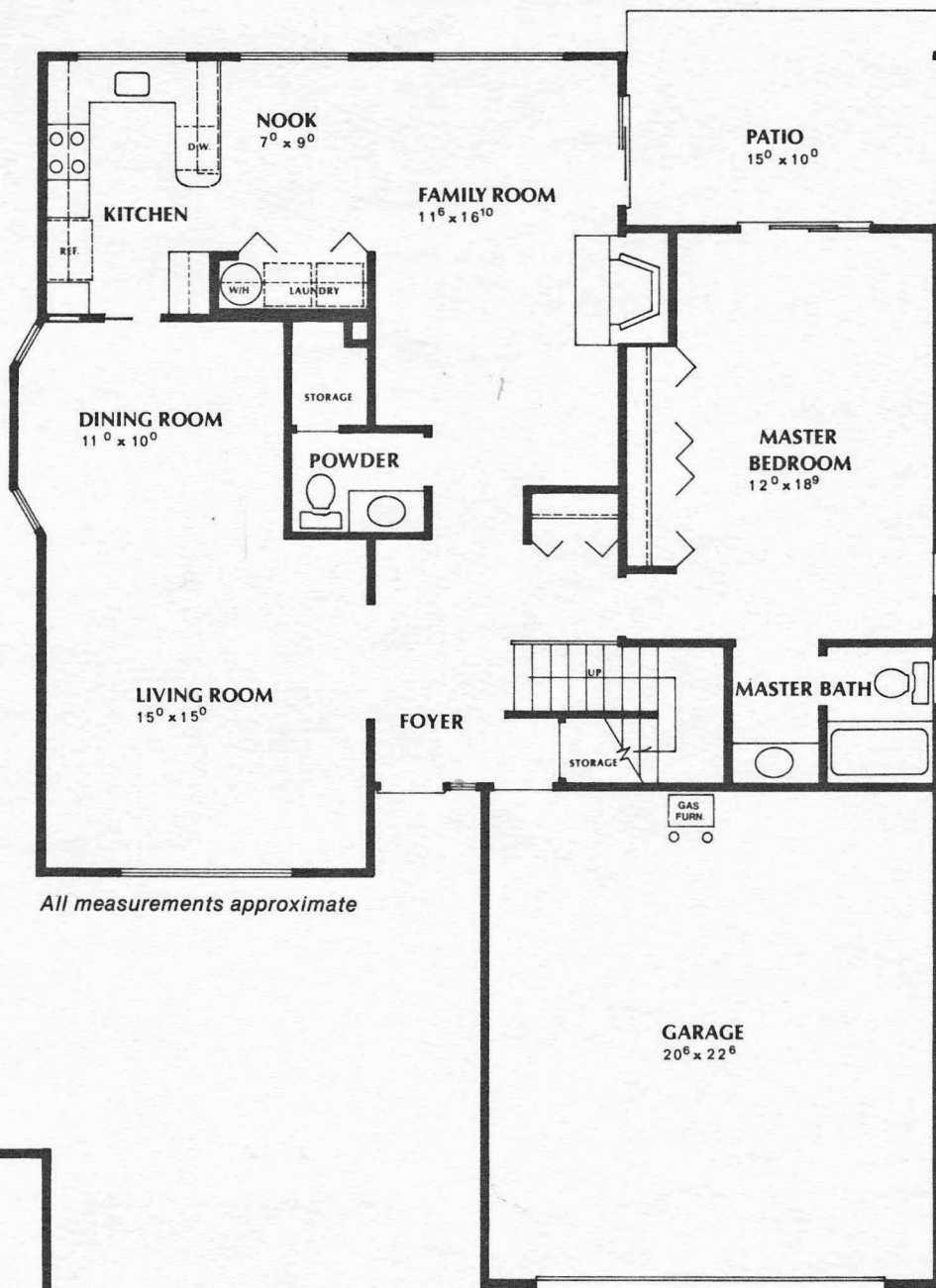
ALL ARTISTS CONCEPTIONS OF EXTERIOR ELEVATIONS INCLUDE OPTIONAL FEATURES.

the
vista

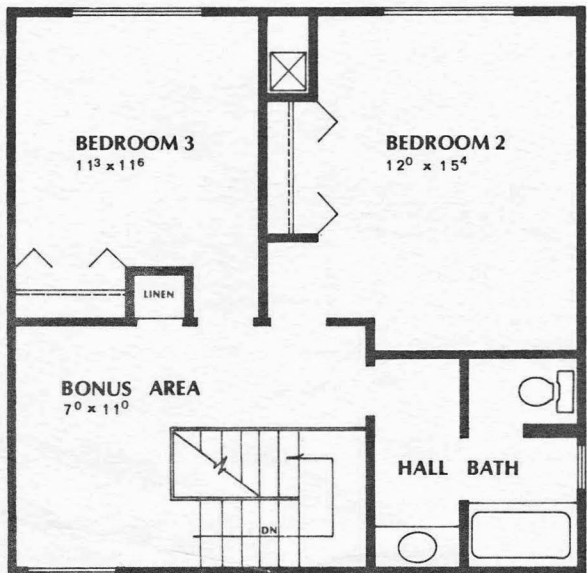
1810 N.E. 149th

Special Features:

- 2075 sq. ft.
- Three Bedrooms
- Family Room
- Bonus Area
- Vaulted Living Room
- Covered Patio
- Masonery Fireplace
- Two and Two Thirds Baths
- Bay Window Dining Room
- Abundant Storage

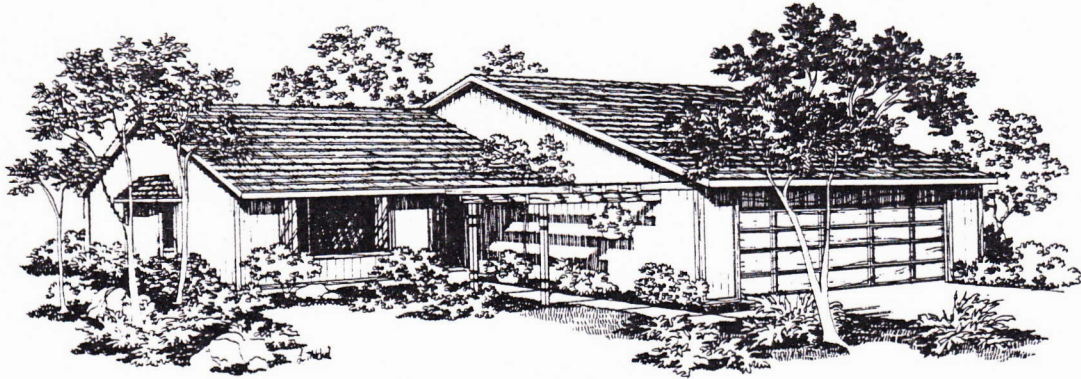


All measurements approximate

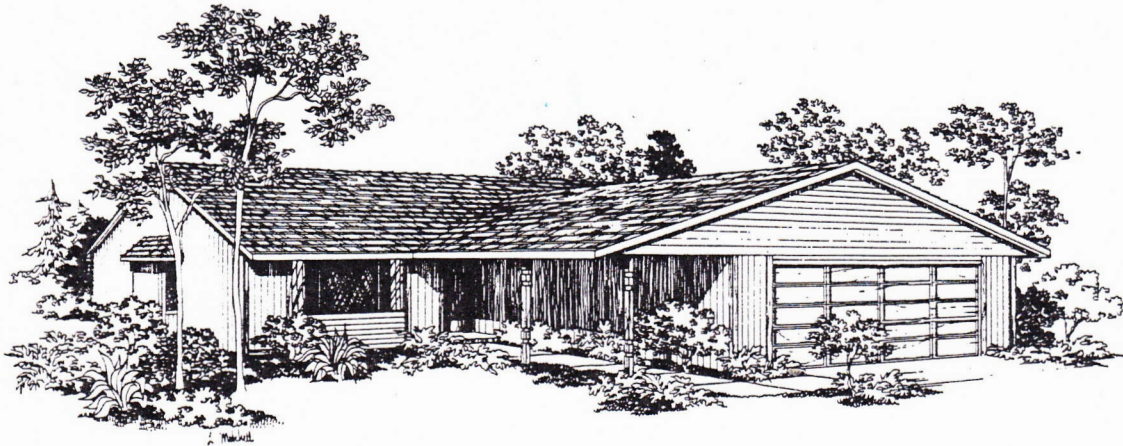


Another Good Living Project
of Tualatin Development Company, Inc.
Northeast 148th and Halsey Streets

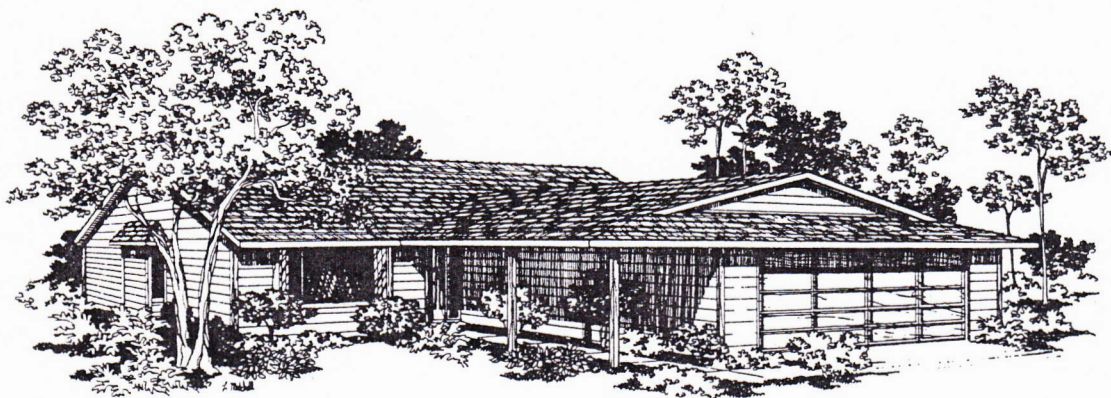
SALES BY
PRESTIGE PROPERTIES, Realtors



The WAVERLY — Model Elevation A



The WAVERLY — Model Elevation B

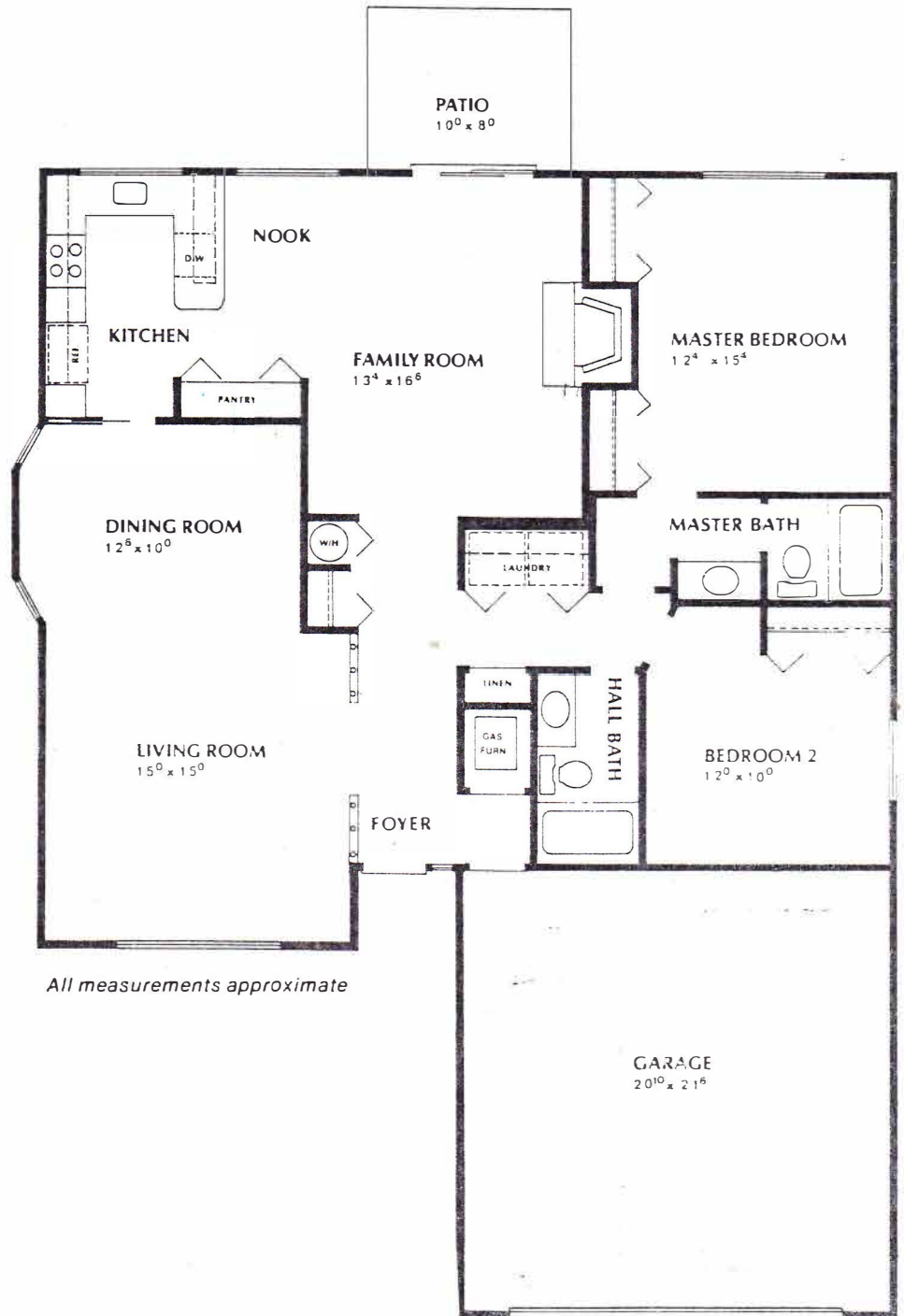


The WAVERLY — Model Elevation D

ALL ARTISTS CONCEPTIONS OF EXTERIOR ELEVATIONS INCLUDE OPTIONAL FEATURES.

Special Features:

- 1500 sq. ft.
- Spacious Family Room
- Masonry Fireplace
- Bay Window Dining Room
- Vaulted Living Room
- Formal Entry
- Pantry
- Breakfast Nook
- Central Laundry
- Efficiently Planned Kitchen



All measurements approximate

THE WINDSOR



-Model Elevation A



-Model Elevation C

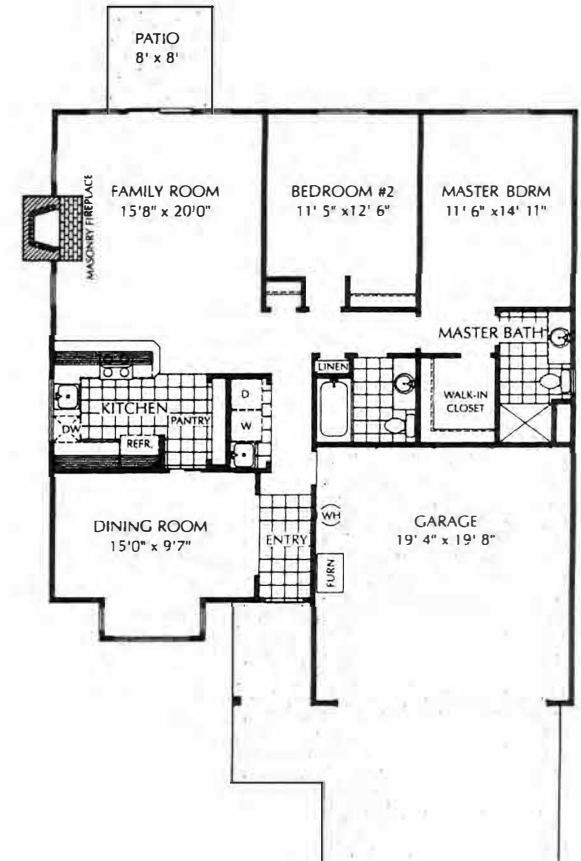


-Model Elevation B

All artist's conceptions of exterior elevations may include optional features.

SPECIAL FEATURES:

- 1304 Sq. Ft. Living Area
- Two Bedrooms/Two Baths
- Bay Window
- Large Kitchen/Living Area
- Master Bedroom Suite with Walk-in Closet
- Forced Air Gas Furnace
- Masonry Fireplace
- Machine Brocade Ceilings
- Tile or Oak Entry
- Electric Garage Door Opener
- Self-Cleaning Oven
- Custom Oak or European Cabinets
- Wood-Wrapped Windows
- Deadbolt Door Locks
- Laundry Closet with Deep Laundry Sink



1304 SQUARE FEET



In our effort to constantly update and improve our designs, we reserve the right to modify or change plans, specifications, features, and prices without prior notice. Room sizes are approximate.

Hillman Properties Northwest
Developers of King City, Summerfield, Summerplace,
Fairway Village and The Highlands

the
woodland

1030 SQ. FT.

