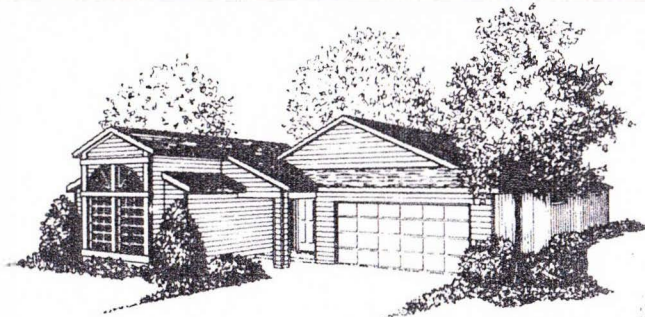
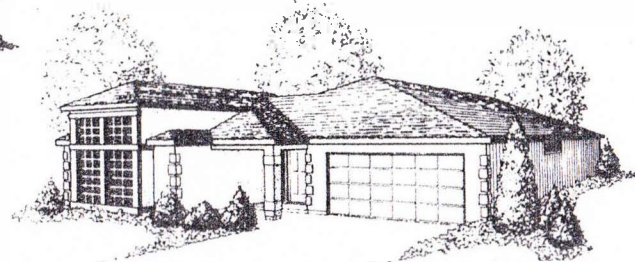


THE MUIRFIELD



-Model Elevation A

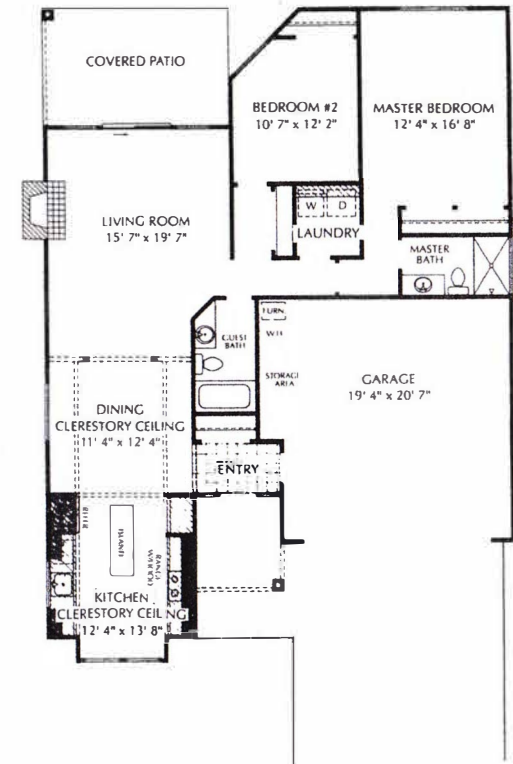


-Model Elevation B

All artist's conceptions of exterior elevations may include optional features.

SPECIAL FEATURES:

- 1314 Sq. Ft. Living Area
- Vaulted Designer Kitchen / Dining Area with Clerestory Windows
- Oversized Master Suite
- Two Bedrooms / Two Baths
- Large Covered Patio
- Custom Oak or European Cabinets
- Masonry Fireplace
- Forced Air Gas Furnace
- Tile or Oak Entry
- Wood-Wrapped Windows
- Laundry Room
- Storage Space in Garage
- Dead Bolt Door Lock
- Garage Door Opener



1314 SQUARE FEET



NE 148th & Halsey Street
Portland, Oregon 97230
503/257-0731

In our effort to constantly update and improve our designs, we reserve the right to modify or change plans, specifications, features, and prices without prior notice. Room sizes are approximate.

Hillman Properties Northwest
Developers of King City, Summerfield, Summerplace,
Fairway Village and The Highlands