

The Riviera



SPECIAL FEATURES:

- 1704 Square Feet Living Area
- Tile or Oak Entry
- Two Bedroom/Two Bathrooms
- Vaulted Great Room with Fireplace and Built-in Cabinets
- Large Covered Patio
- Vaulted Master Bedroom Suite with Fireplace
- Completed Garage with Door Opener
- Interior Laundry Room with Sink and Upper Cabinets
- Deadbolt Door Lock
- Skylight Kitchen with European Cabinets and Microwave Oven
- Optional Brick Courtyard
- Modular Closet Shelving



SPECIAL NATURAL CHOICE GAS FEATURES

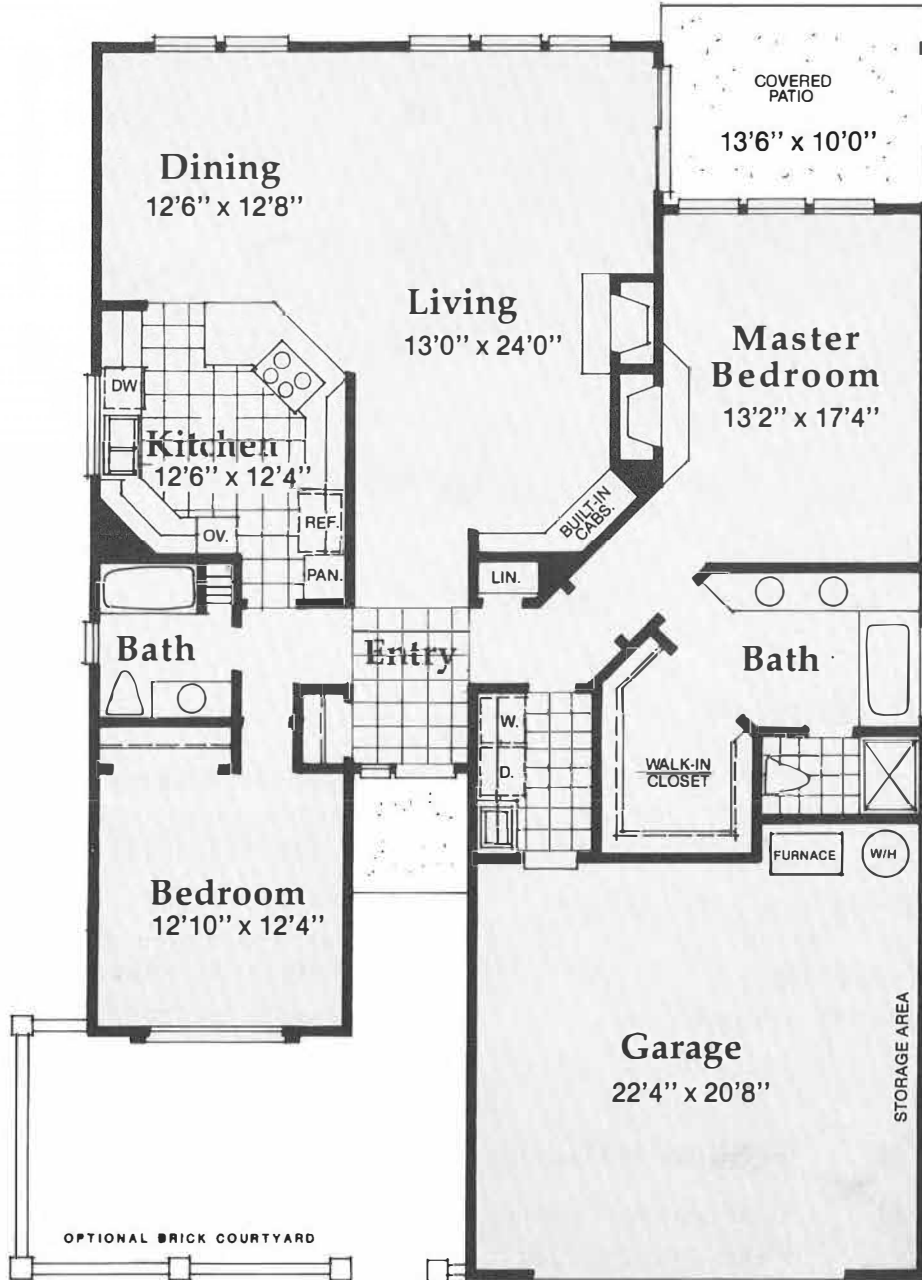
- Gas Jenn Air Cooktop
- High Efficiency Gas Forced Air Furnace
- Fireplace Gas Logs in both Great Room and Master Bedroom
- Gas Hot Water Heater
- Gas Piping for Barbeque at Patio

summerplace

Northeast 148th and Halsey Streets
Portland, Oregon

Hillman Properties
NORTHWEST

Developers of King City, Summerfield, The
Highlands, Summerplace and Fairway Village



The Riviera

1704 SQ. FT.

In our effort to constantly update and improve our designs, we reserve the right to modify or change plans, specifications, features, and prices without prior notice. Room sizes are approximate.